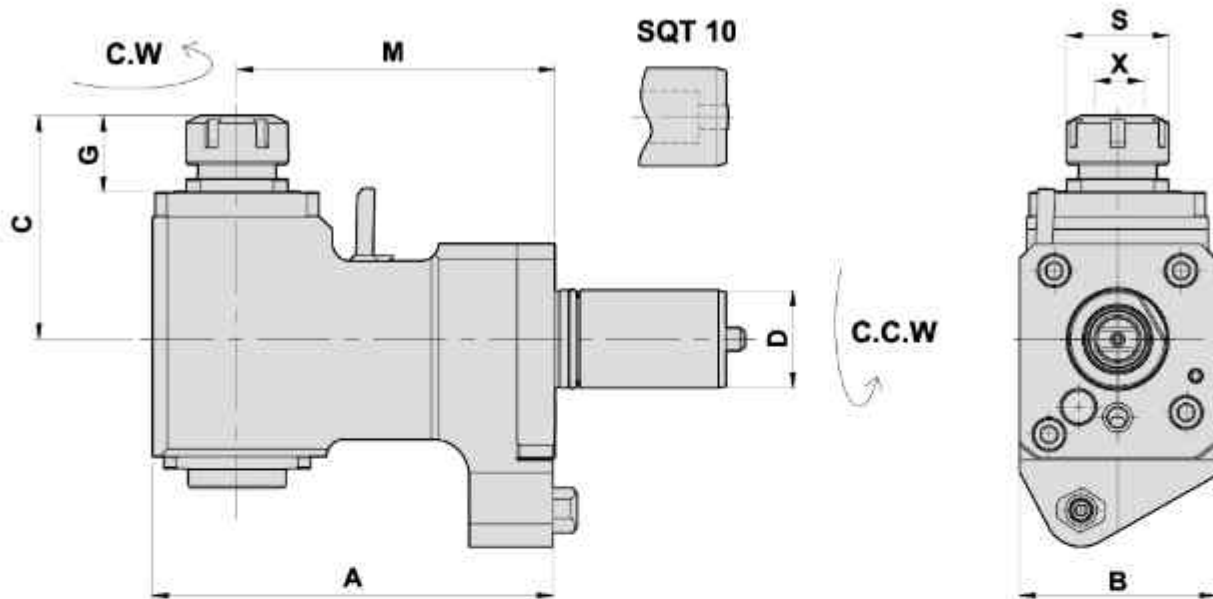


## H TYPE MILLING AND DRILLING HEAD FOR MAIN SPINDLE

TYPE MAZAK SUPER QUICK TURN

### H系(徑向)鑽銑刀座 (90°)



- To be used for collet DIN 6499
- External coolant supply
- Collet is not included

#### DIMENSIONS

Machine Type	Models	D	X Capacity	S	Maximum R.P.M.	A	B	C	G	M	Code No.	Order No.	(Kg) Weight
SQT 10M-12D 15M-16D SQT200M-16D 250M-16D	QTN 100M/150M SQT 10M	40	1-16 ER25	42	5000	135	75	92.5	32.5	100	2401AA-000	5352100	7.9
SQT 10M-12D 15M-16D SQT200M-16D 250M-16D	QTN 100M/150M SQT 10M	40	2-20 ER32	50	5000	135	75	101	41	100	2401AY-000	5352132	8
SQT 15M-12D 18M-12D SQT200M-12D 250M-12D	QTN 200M/250M	40	1-16 ER25	42	5000	165	80	92	32	130	2401AH-000	5362100	9
	SQT 15/18M	40	2-20 ER32	50	5000	165	80	95	35	130	2401AI-000	5362132	9
	SQT 15/18M	40	2-20 ER32	50	(1:2) 10000	169	80	103	37	130	2401AT-000	*5362132-1 增速	11.6
QTNX 300M/350M	SQT 28M/30M	50	2-20 ER32	50	5000	203	96	125	40	160	2501AA-000	5382002	18.1
QTNX 300M/350M	SQT 28M/30M	50	3-26 ER40	63	5000	203	96	130	45	160	2501AB-000	5382002 -ER40	18.3

\*1.2倍增速

## H TYPE TAPPING HEAD

### H系(徑向)彈性攻牙刀座 (90°)

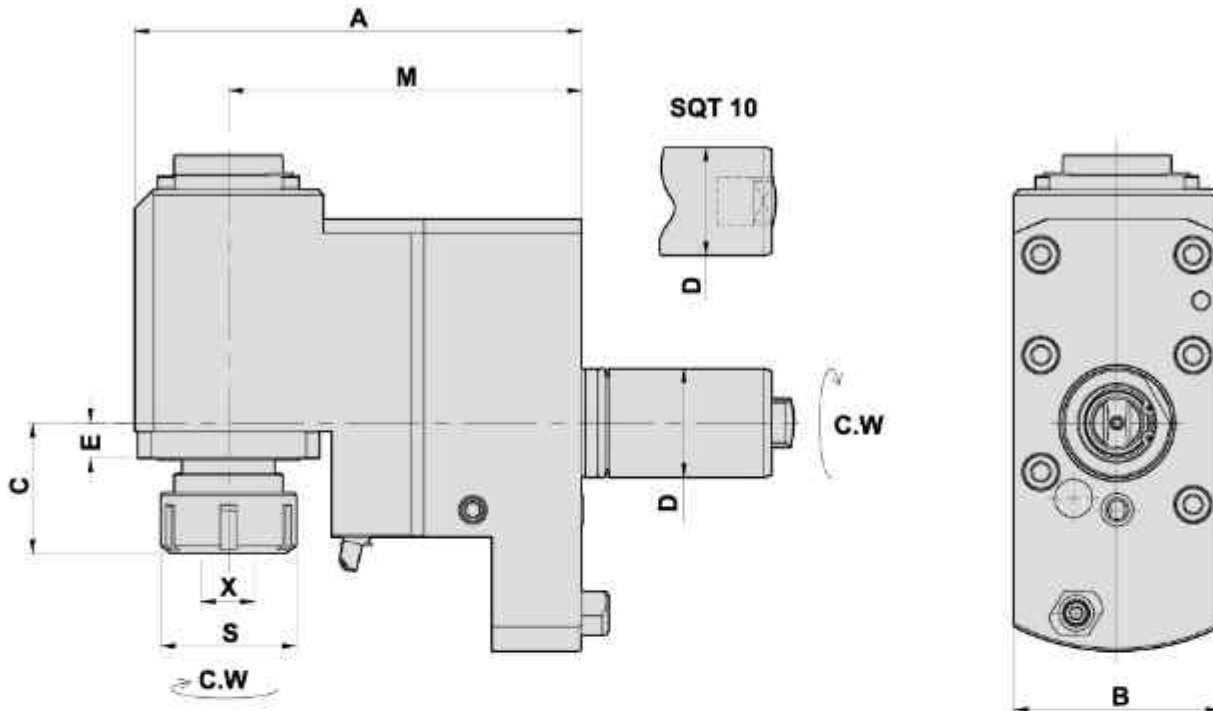
#### DIMENSIONS

Machine Type	Models	D	X Capacity	S	Maximum R.P.M.	A	B	C	G	M	Code No.	Order No.	(Kg) Weight
SQT 10M-12D 15M-16D SQT200M-16D 250M-16D	QTN 100M/150M SQT 10M	40	1-10 ER16	30	3000	135	75	99	39	100	2401AB-000	5352300	7.9
SQT 15M-12D 18M-12D SQT200M-12D 250M-12D	QTN 200M/250M SQT 15/18M	40	1-13 ER20	35	3000	165	80	109	49	130	2401AJ-000	5362300	9.1

## H TYPE BACK MILLING . DRILLING HEAD FOR SUB SPINDLE

TYPE MAZAK SUPER QUICK TURN

### H系(徑向)後加工鑽銑刀座 (90°)



- To be used for collet DIN 6499
- External coolant supply
- Collet is not included

#### DIMENSIONS

Machine Type	Models	D	X Capacity	S	Maximum R.P.M.	A	B	C	E	M	Code No.	Order No.	(Kg) Weight
SQT 10M-12D 15M-16D SQT200M-16D 250M-16D	QTN 100M/150M SQT 10M	40	1-16 ER25	42	5000	135	76	44	13	100	2401AC-000	5354300	8.8
SQT 15M-12D 18M-12D SQT 200M-12D 250M-12D	QTN 200M/250M SQT 15M/18M	40	1-16 ER25	42	5000	165	76	46	13	130	2401AK-000	5364300	11.2
			2-20 ER32	50	5000	165	76	48	13	130	2401AL-000	5364332	11.2

## H TYPE BACK TAPPING HEAD

### H系(徑向)後加工彈性攻牙刀座 (90°)

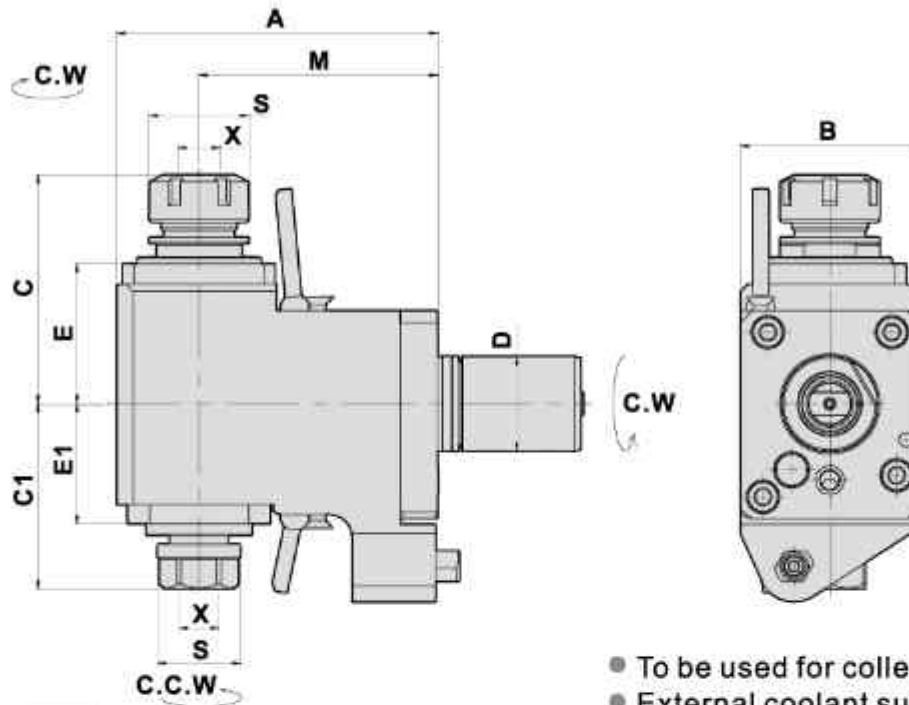
#### DIMENSIONS

Machine Type	Models	D	X Capacity	S	Maximum R.P.M.	A	B	C	E	M	Code No.	Order No.	(Kg) Weight
SQT 10M-12D 15M-16D SQT200M-16D 250M-16D	QTN 100M/150M SQT 10M	40	1-10 ER16	30	3000	135	76	52	13	100	2401AD-000	5354200	8.8
SQT 15M-12D 18M-12D SQT200M-12D 250M-12D	QTN 200M/250M SQT 15M/18M	40	1-13 ER20	35	3000	165	76	79	13	130	2401AM-000	5364200	11.4

## H TYPE MILLING . DRILLING HEAD DOUBLE HEADS

TYPE MAZAK SUPER QUICK TURN

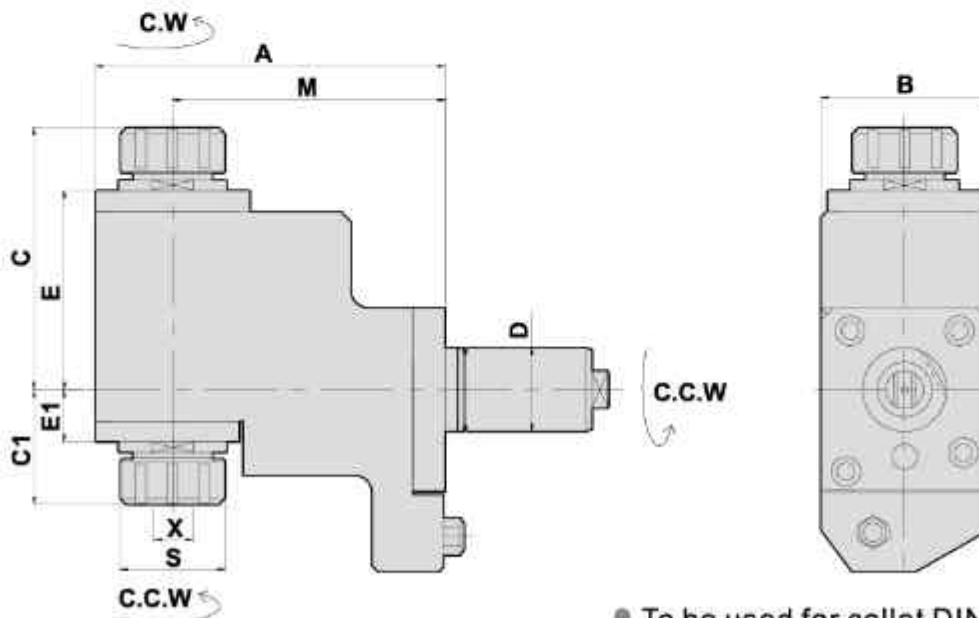
### H系(徑向)雙頭鑽銑刀座 (90°)



- To be used for collet DIN 6499
- External coolant supply
- Collet is not included

#### DIMENSIONS

Machine Type	Models	D	X Capacity	S	Maximum R.P.M.	A	B	C	C1	E	E1	M	Code No.	Order No.	(Kg) Weight
SQT 10M-12D 15M-16D	QTN100M/150M	40	1st-ER25	42	5000	135	75	96	77.5	59	50	100	2401AE-000	5352111	7.8
SQT200M-16D 250M-16D	SQT 10M		2hd-ER20	35											



- To be used for collet DIN 6499
- External coolant supply
- Collet is not included

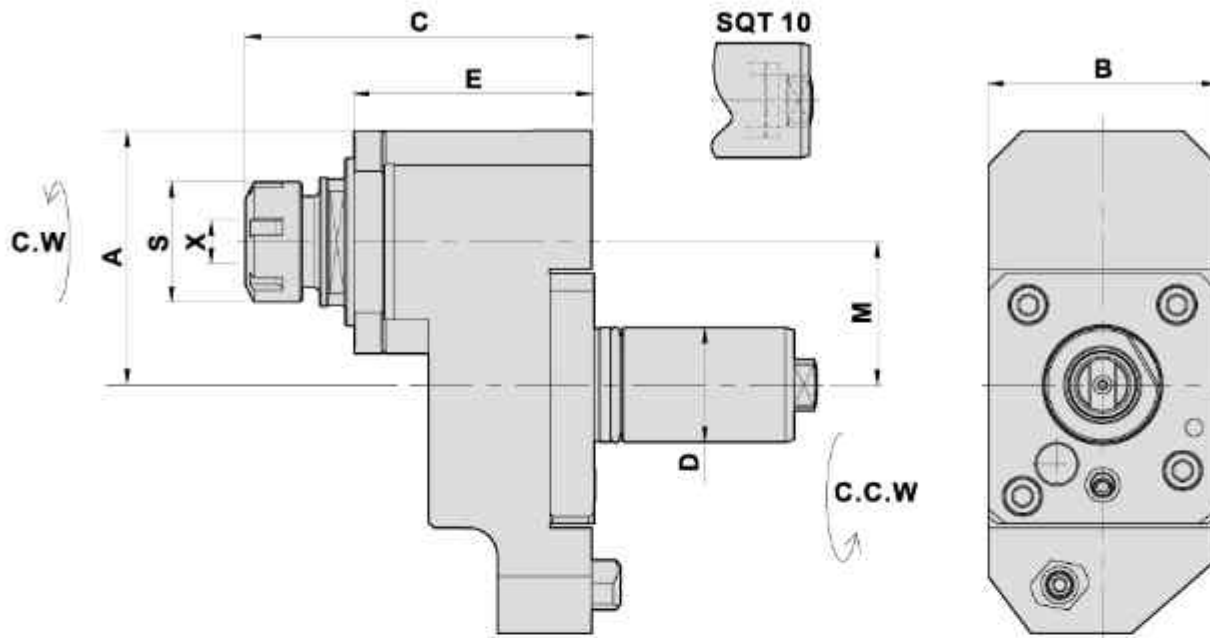
#### DIMENSIONS

Machine Type	Models	D	X Capacity	S	Maximum R.P.M.	A	B	C	C1	E	E1	M	Code No.	Order No.	(Kg) Weight
SQT 15M-12D 18M-12D	QTN200M/250M	40	2-20	50	5000	167	80	127	57	89	19	130	2401AN-000	5364111	10.7
SQT200M-12D 250M-12D	SQT 15/18M		ER32												

### V TYPE MILLING. DRILLING HEAD OFFSET

TYPE MAZAK SUPER QUICK TURN

### V系(軸向)偏心鑽銑刀座 (0°)



- To be used for collet DIN 6499
- External coolant supply
- Collet is not included

#### DIMENSIONS

Machine Type	Models	D	X Capacity	S	Maximum R.P.M.	A	B	C	E	M	Code No.	Order No.	(Kg) Weight
SQT 10M-12D 15M-16D SQT200M-16D 250M-16D	QTN 100M/150M SQT 10M	40	1-16 ER25	42	6000	86	75	101	90	50	1401AC-000	5352700-25A	6.4
						88	75	120	82	50	1401AD-000	5352700	6.6
						57	75	106.5	76.5	29	1401AAH000	5352700-25-29	4
SQT 15M-12D 18M-12D SQT200M-12D 250M-12D	QTN 200M/250M SQT 15M/18M	40	1-16 ER25	42	6000	89	80	122	84	50	1401AN-000	5362200	7.2
					(1:2) 10000	89	75	118	84	50	*1401AO-000	*5362201	6.7
					6000	89	80	125.5	84	50	1401AP-000	5362232	7.2
QTNX 300M/350M	SQT 28M/30M	50	2-20 ER32	50	6000	114	96	153	100	70	1501AC-000	5382100	12.3
QTNX 300M/350M	SQT 28M/30M	50	3-26 ER40	63	6000	114	96	157	100	70	1501AD-000	5382100-ER40	12.5

\*1.2倍增速

### V TYPE TAPPING HEAD OFFSET

### V系(軸向)偏心彈性攻牙刀座 (0°)

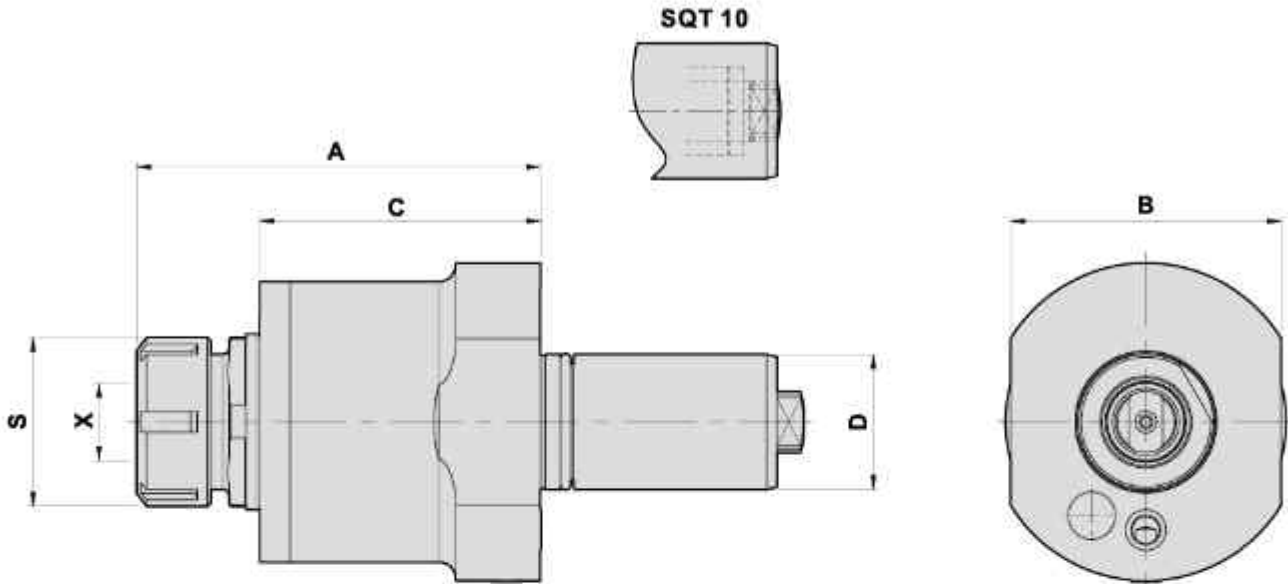
#### DIMENSIONS

Machine Type	Models	D	X Capacity	S	Maximum R.P.M.	A	B	C	E	M	Code No.	Order No.	(Kg) Weight
SQT 10M-12D 15M-16D SQT200M-16D 250M-16D	QTN 100M/150M SQT 10M	40	1-10 ER16	30	4000	88	75	119	81.5	50	1401AE-000	5352800	6.5
			1-13 ER20	35	4000	88	75	121	82	50	1401AAD000 -TER20	5352800	6.6
SQT 15M-12D 18M-12D SQT200M-12D 250M-12D	QTN 200M/250M SQT 15/18M	40	1-13 ER20	35	4000	89	80	123	84	50	1401AQ-000	5362400	7.1

## V TYPE MILLING. DRILLING HEAD DA-SERIES

TYPE MAZAK SUPER QUICK TURN

### V系(軸向)鑽銑刀座 (0°)



- To be used for collet DIN 6499
- External coolant supply
- Collet is not included

#### DIMENSIONS

Machine Type	Models	D	X Capacity	S	Maximum R.P.M.	A	B	C	Code No.	Order No.	(Kg) Weight
SQT 10M-12D 15M-16D SQT200M-16D 250M-16D	QTN 100M/150M SQT 10M	40	1-16 ER25	42	6000	93	75	62.5	1401AA-000	5352200	3.1
SQT 15M-12D 18M-12D SQT200M-12D 250M-12D	QTN 200M/250M SQT 15/18M	40	2-20 ER32	50	6000	119.5	80	82.5	1401AJ-000	5362218	4.2

### V TYPE TAPPING HEAD V系(軸向)彈性攻牙刀座 (0°)

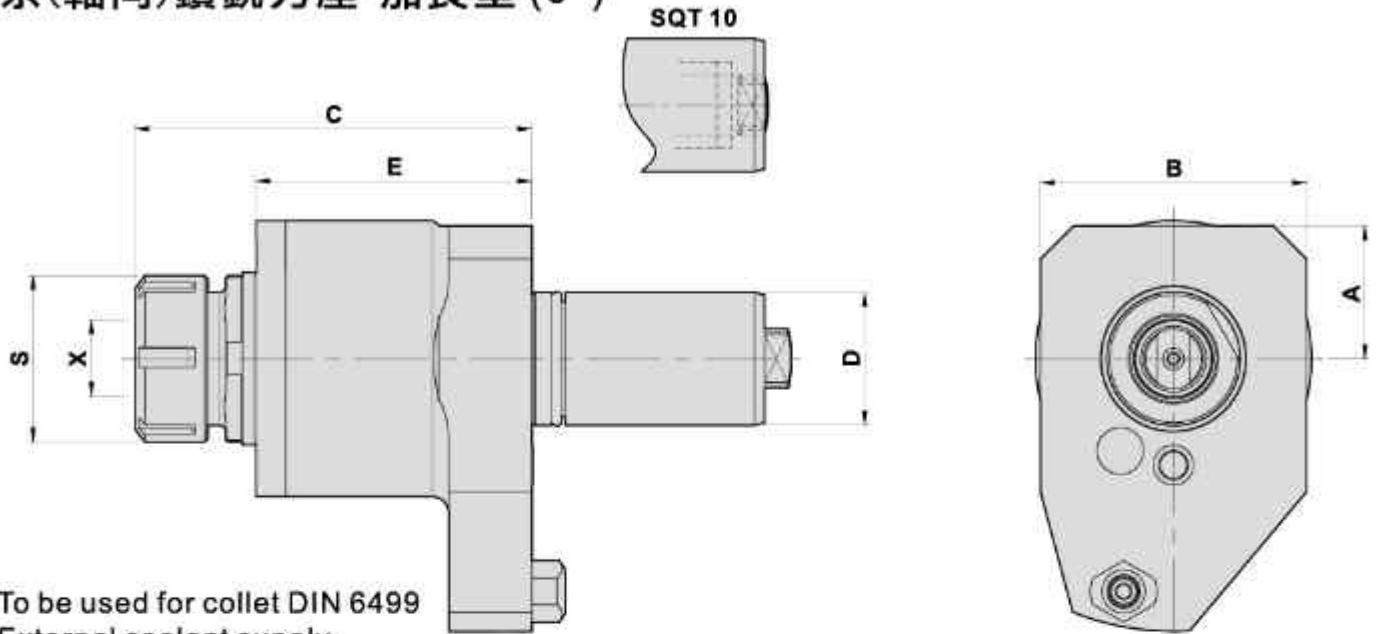
#### DIMENSIONS

Machine Type	Models	D	X Capacity	S	Maximum R.P.M.	A	B	C	Code No.	Order No.	(Kg) Weight
SQT 10M-12D 15M-16D SQT200M-16D 250M-16D	QTN 100M/150M SQT 10M	40	1-10 ER16	30	3000	100	75	62.5	1401AB-000	5352400	3.1
SQT 15M-12D 18M-12D SQT200M-12D 250M-12D	QTN 200M/250M SQT 15/18M	40	1-13 ER20	35	3000	127	80	82.5	1401AK-000	5362220	4.3

## V TYPE MILLING .DRILLING HEAD DA-SERIES, EXTENSION

TYPE MAZAK SUPER QUICK TURN

### V系(軸向)鑽銑刀座-加長型 (0°)

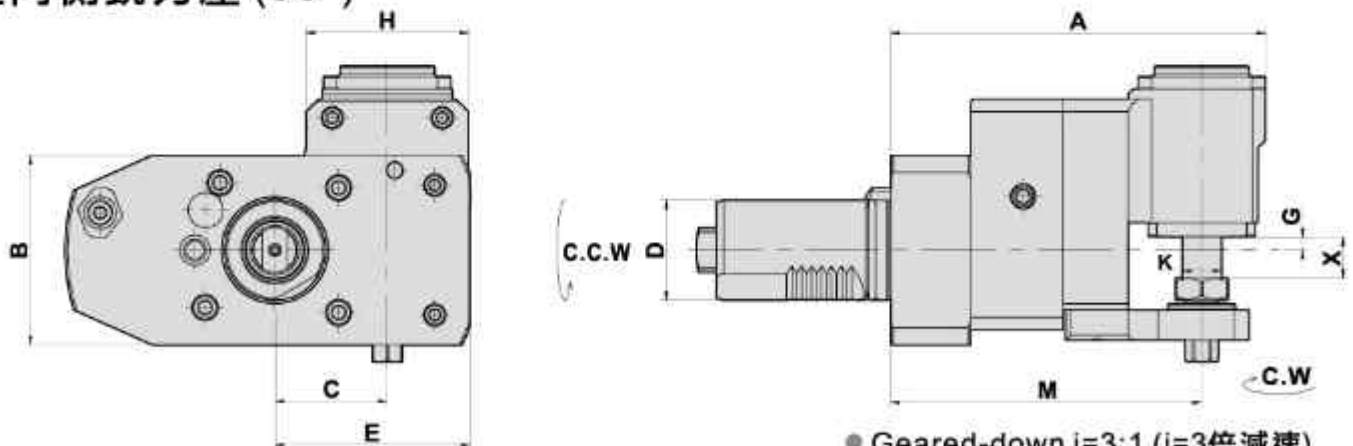


- To be used for collet DIN 6499
- External coolant supply
- Collet is not included

#### DIMENSIONS

Machine Type	Models	D	X Capacity	S	Maximum R.P.M.	A	B	C	E	Code No.	Order No.	(Kg) Weight
SQT 15M-12D 18M-12D	QTN 200M/250M	40	2-20	50	6000	40	80	119.5	82.5	1401AL-000	5362632	4.7
SQT200M-12D 250M-12D	SQT 15/18M		40			ER32	40	80	133.5	98.5	1401AM-000	5362632-L

## H TYPE MILLING .DRILLING HEAD DISK CUTTER UNITS 徑向側銑刀座 (90°)



- Geared-down  $i=3:1$  ( $i=3$ 倍減速)
- To be used for collet DIN 6499
- External coolant supply

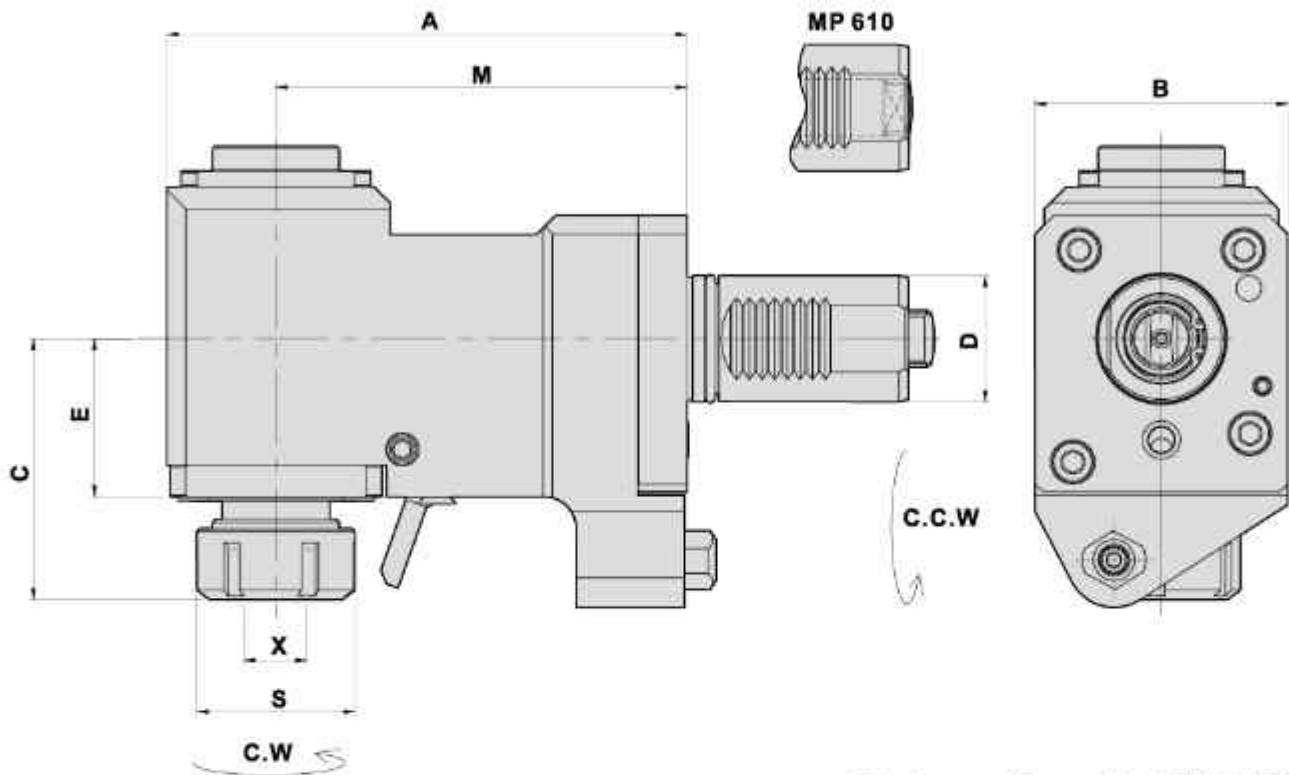
#### DIMENSIONS

Machine Type	Models	D	Maximum R.P.M.	X	A	B	C	E	G	H	K	M	Code No.	Order No.	(Kg) Weight
SQT 15M-12D 18M-12D	QTN 200M/250M	40	3000	16	150	76	45	78	5	65	16	125	2401A4-000	SQT15M /18M-16C-3	8
SQT200M-12D 250M-12D	SQT 15/18M														

## H TYPE MILLING. DRILLING HEAD

TYPE MAZAK MULTIPLEX

### H系(徑向)鑽銑刀座 (90°)



- To be used for collet DIN 6499
- External coolant supply
- Collet is not included

#### DIMENSIONS

Machine Type	Models	D	X Capacity	S	Maximum R.P.M.	A	B	C	E	M	Code No.	Order No.	(Kg) Weight
MP 410N-12D 415N-12D MP 610-12D 6200-16D	MP 610	40	1-16 ER25	42	5000	150	75	80.5	50	115	2401AF-000	5346800	8.1
MP 420N-12D 620N-12D MP 620-12D 6200-12D	MP 620	40	1-16 ER25	42	5000	165	80	80.5	50	130	2401AP-000	5347600	8.8
			2-20 ER32	50	5000	165	80	82.5	50	130	2401AQ-000	5347632	8.9
			2-20 ER32	50	(1:2) 10000	169	88	103	68	130	* 2401AR-000	*5347632-1	11.1

\*1.2倍增速

## H TYPE TAPPING HEAD

### H系(徑向)彈性攻牙刀座 (90°)

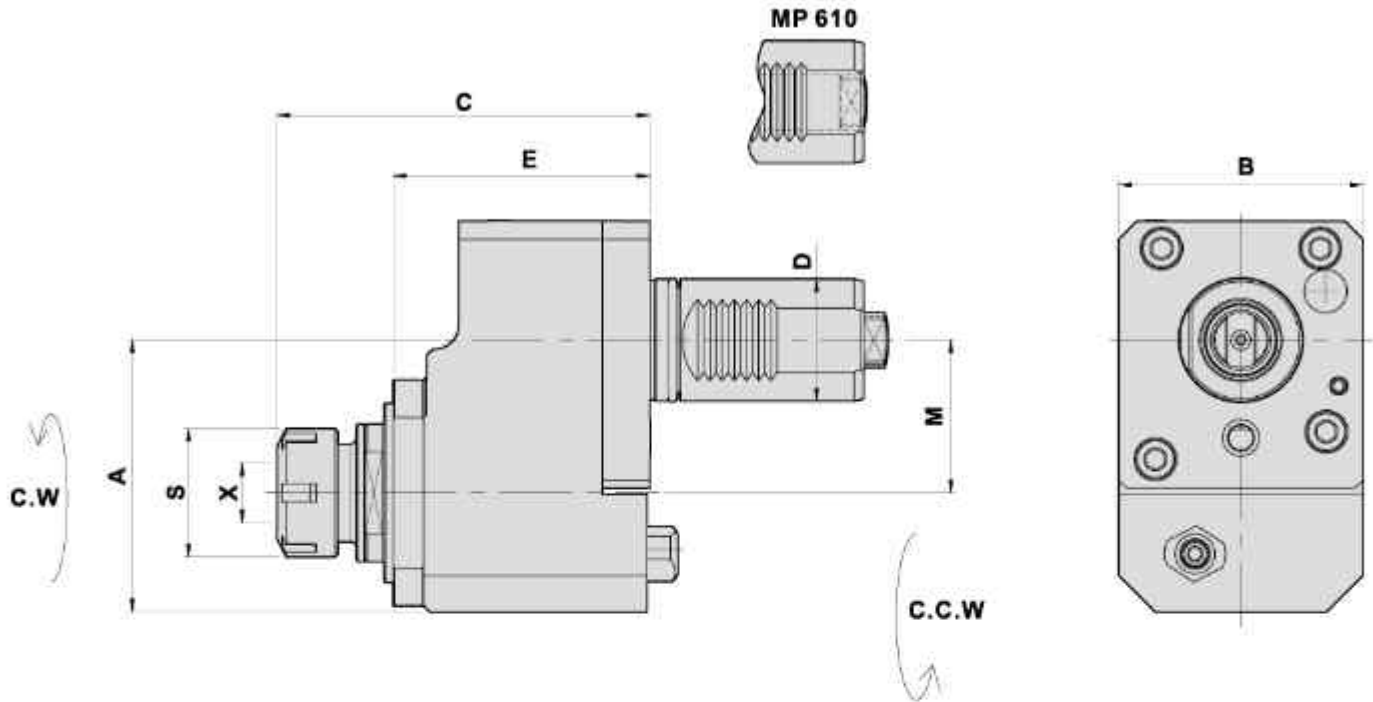
#### DIMENSIONS

Machine Type	Models	D	X Capacity	S	Maximum R.P.M.	A	B	C	E	M	Code No.	Order No.	(Kg) Weight
MP 410N-12D 415N-12D MP 610-12D 6200-16D	MP 610	40	1-10 ER16	30	3000	150	75	87.5	50	115	2401AG-000	5346600	8.1
MP 420N-12D 620N-12D MP 620-12D 6200-12D	MP 620	40	1-13 ER20	35	3000	160	80	115.5	50	130	2401AS-000	5347300	9.2

## V TYPE MILLING. DRILLING HEAD OFFSET

TYPE MAZAK MULTIPLEX

### V系(軸向)偏心鑽銑刀座 (0°)



- To be used for collet DIN 6499
- External coolant supply
- Collet is not included

#### DIMENSIONS

Machine Type	Models	D	X Capacity	S	Maximum R.P.M.	A	B	C	E	M	Code No.	Order No.	(Kg) Weight
MP 410N-12D 415N-12D MP 610-12D 6200-16D	MP 610	40	1-16 ER25	42	6000	89	75	122	84	50	1401AH-000	5346100	5.9
MP 420N-12D 620N-12D MP 620-12D 6200-12D	MP 620	40	1-16 ER25	42	6000	89	80	122	84	50	1401AV-000	5347200	6.4
			2-20 ER32	50	6000	89	80	125.5	84	50	1401AW-000	5347232	6.4

## V TYPE TAPPING HEAD OFFSET

### V系(軸向)偏心彈性攻牙刀座 (0°)

#### DIMENSIONS

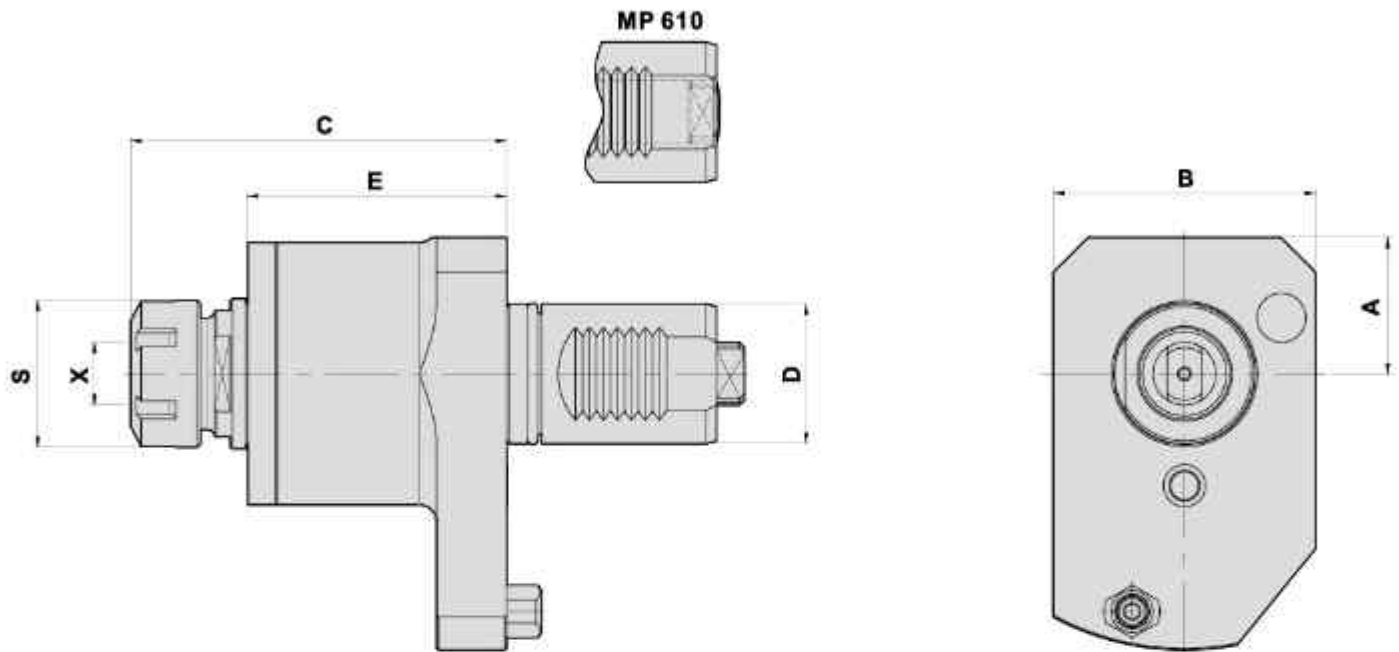
Machine Type	Models	D	X Capacity	S	Maximum R.P.M.	A	B	C	E	M	Code No.	Order No.	(Kg) Weight
MP 410N-12D 415N-12D MP 610-12D 6200-16D	MP 610	40	1-10 ER16	30	3000	89	75	122	84	50	1401AI-000	5346200	5.9
MP 420N-12D 620N-12D MP 620-12D 6200-12D	MP 620	40	1-13 ER20	35	3000	89	80	123.5	84	50	1401AX-000	5347400	6.4



## V TYPE MILLING. DRILLING HEAD DA-SERIES

TYPE MAZAK MULTIPLEX

### V系(軸向) 鑽銑刀座 (0°)



- To be used for collet DIN 6499
- External coolant supply
- Collet is not included

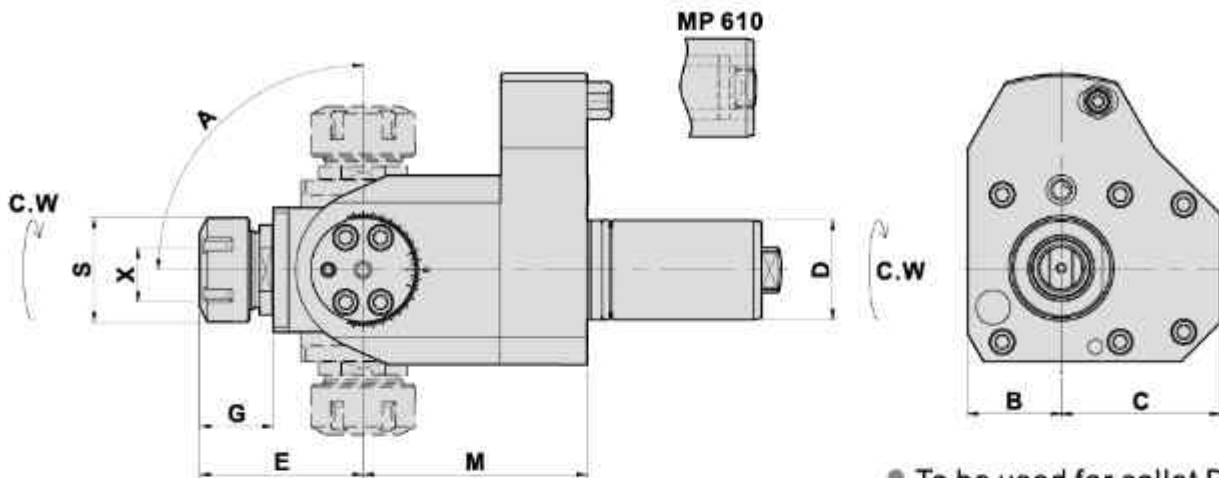
#### DIMENSIONS

Machine Type	Models	D	X Capacity	S	Maximum R.P.M.	A	B	C	E	Code No.	Order No.	(Kg) Weight
MP 410N-12D 415N-12D MP 610-12D 6200-16D	MP 610	40	1-16 ER25	42	6000	39	75	108	74	1401AG-000	5346101	3.6
MP 420N-12D 620N-12D MP 620-12D 6200-12D	MP 620	40	1-16 ER25	42	6000	40	80	119	82.6	1401AT-000	5347202	4.8
			2-20 ER32	50	6000	40	80	120	82.6	1401AU-000	5347201	4.7

## ANGULAR HEAD

TYPE MAZAK MULTIPLEX

### 萬向鑽銑刀座



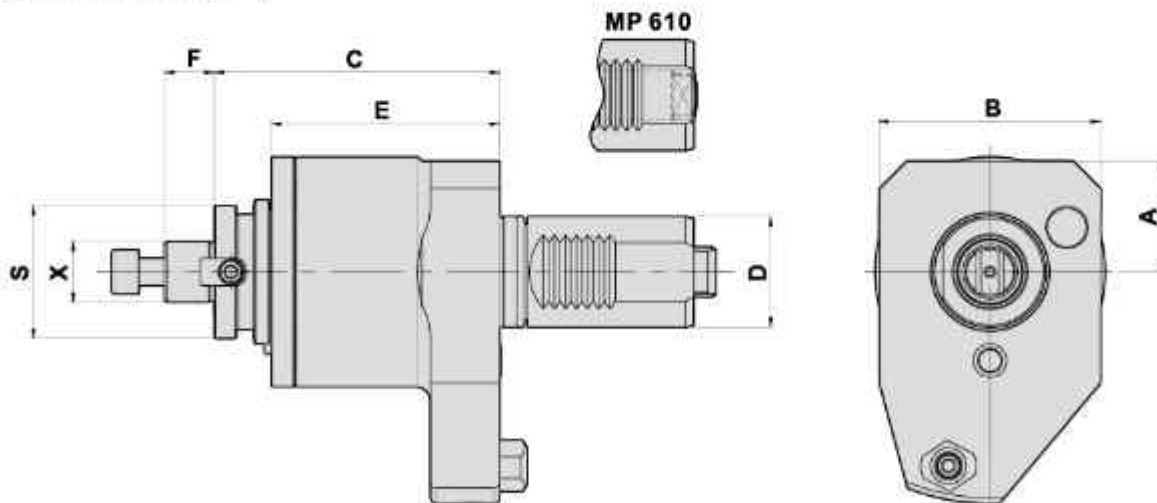
- To be used for collet DIN 6499
- External coolant supply
- Collet is not included

#### DIMENSIONS

Machine Type	Models	D	X Capacity	S	Maximum R.P.M.	A	B	C	E	G	M	Code No.	Order No.	(Kg) Weight
MP 410N-12D 415N-12D MP 610-12D 6200-16D	MP 610	40	1-16 ER25	42	5000	±90°	38	65	65.5	29.5	70	1401AAC000	5346101-25B	5.3
MP 410N-12D 415N-12D MP 610-12D 6200-16D	MP 610	40	1-16 ER25	42	5000	±90°	38	65	65.5	29.5	127	1401AAF000	5346101-25B-L	8.7
MP 420N-12D 620N-12D MP620-12D 6200-12D	MP 620	40	1-16 ER25	42	5000	±90°	38	65	65.5	29.5	90	1401AAG000	5347201-25B	7.1

## AXIAL MILLING AND DRILLING HEAD

### 軸向銑削刀具 (0°)



#### DIMENSIONS

- To be used for cutter arbor according to DIN 6358

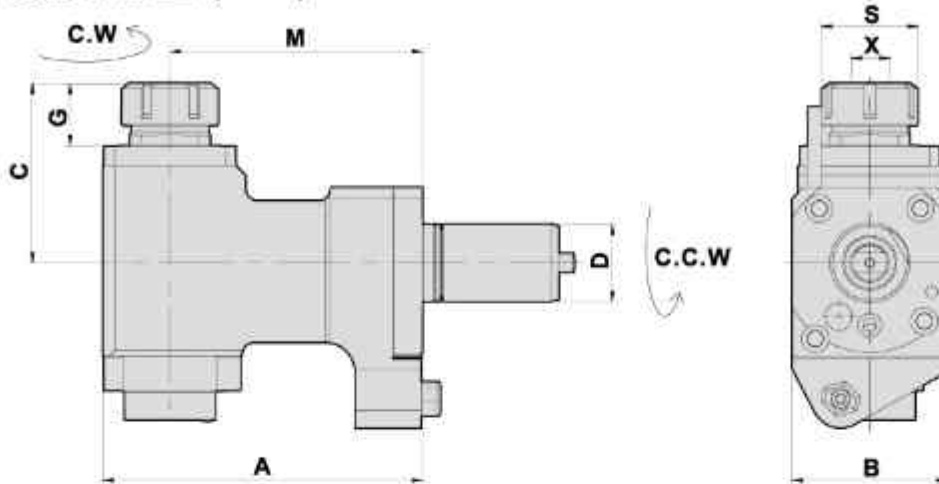
Machine Type	Models	D	X Capacity	S	Maximum R.P.M.	A	B	C	E	F	Code No.	Order No.	(Kg) Weight
MP 410N-12D 415N-12D MP 610-12D 6200-16D	MP 610	40	22	48	6000	39	75	94.5	75	18	1401AAA000	5346601-22C	3.9
MP 420N-12D 620N-12D MP620-12D 6200-12D	MP 620	40	22	48	6000	40	80	103	82.5	18	1401AAB000	5347601-22C	4.9

## H TYPE MILLING AND DRILLING HEAD FOR MAIN SPINDLE

TYPE

MAZAK SUPER QUICK TURN

### H系(徑向) 鑽銑刀座 (90°)



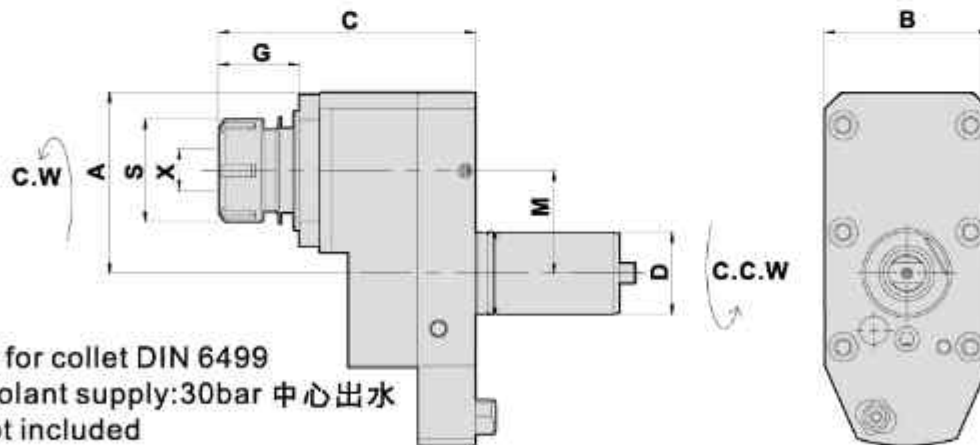
- To be used for collet DIN 6499
- Internal coolant supply: 50bar 中心出水
- Collet is not included

#### DIMENSIONS

Machine Type	Models	D	X Capacity	S	Maximum R.P.M.	A	B	C	G	M	Code No.	Order No.	(Kg) Weight
SQT 15M-12D 18M-12D SQT200M-12D 250M-12D	QTN 200M/250M SQT 15M/18M	40	2-20 ER32	50	5000	165	80	95	35	130	2401AO-000	CW-5362132	9.5
QTNX 300M/350M	SQT 28M/30M	50	2-20 ER32	50	5000	203	96	128	43	160	2501AF-000	CW-5382002	18.5
QTNX 300M/350M	SQT 28M/30M	50	3-26 ER40	63	5000	203	96	130	45	160	2501AC-000	CW-5382002-ER40	18.6

## V TYPE MILLING AND DRILLING HEAD OFFSET

### V系(軸向) 偏心鑽銑刀座 (0°)



- To be used for collet DIN 6499
- Internal coolant supply: 30bar 中心出水
- Collet is not included

#### DIMENSIONS

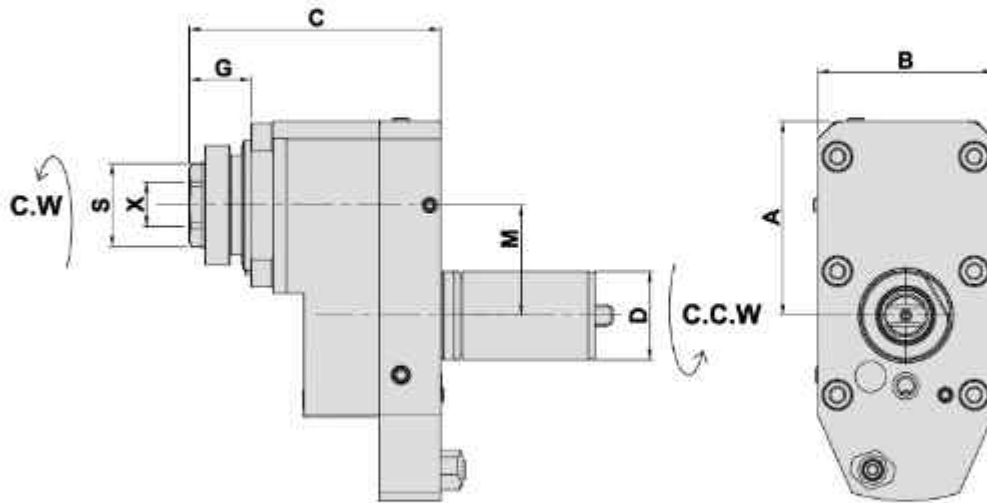
Machine Type	Models	D	X Capacity	S	Maximum R.P.M.	A	B	C	G	M	Code No.	Order No.	(Kg) Weight
SQT 15M-12D 18M-12D SQT200M-12D 250M-12D	QTN 200M/250M SQT 15M/18M	40	2-20 ER32	50	6000	88	80	125	39	50	1401AS-000	CW-5362232	7
QTNX 300M/350M	SQT 28M/30M	50	2-20 ER32	50	6000	108	96	135	41.5	70	*1501AG-000	CW-5382100	10.5
QTNX 300M/350M	SQT 28M/30M	50	3-26 ER40	63	6000	108	96	142	50.5	70	*1501AF-000	CW-5382100-ER40	11

\* 轉向為C.W-C.W

## V TYPE MILLING AND DRILLING HEAD OFFSET

TYPE MAZAK SUPER QUICK TURN

### V系(軸向)偏心鑽銑刀座 (0°)



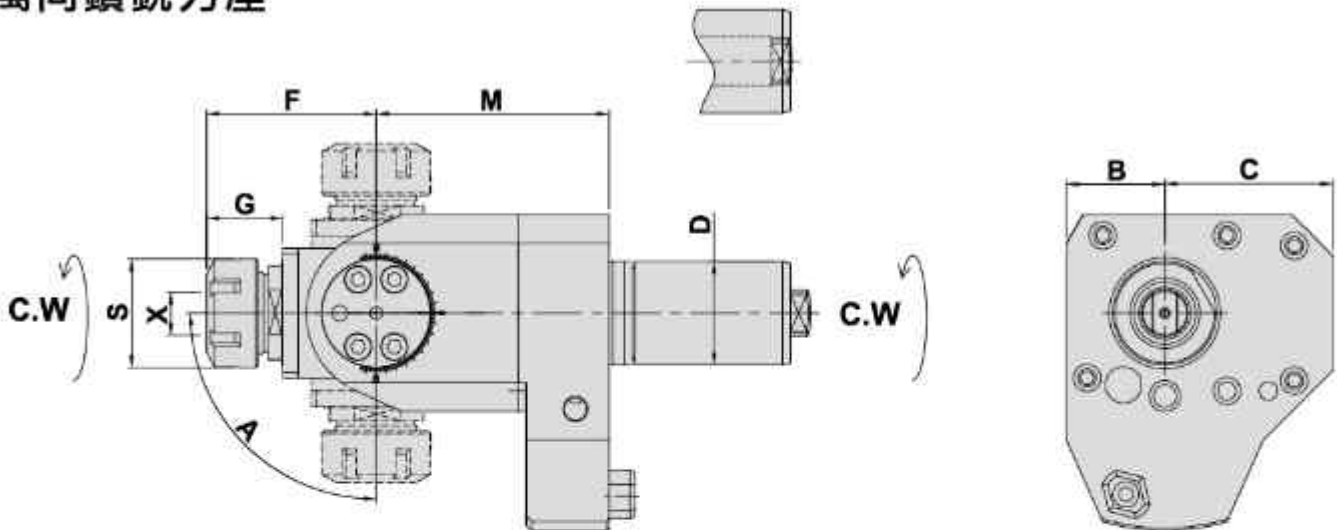
- To be used for collet DIN 6499
- Internal coolant supply: 30bar 中心出水
- Collet is not included

#### DIMENSIONS

Machine Type	Models	D	X Capacity	S	Maximum R.P.M.	A	B	C	G	M	Code No.	Order No.	(Kg) Weight
SQT 15M-12D 18M-12D SQT200M-12D 250M-12D	QTN 200M/250M SQT 15M/18M	40	2-20 ER32A	38	6000	88	80	114	28	50	1401A3-000	CW-5362232-32A	7

### ANGULAR HEAD 萬向鑽銑刀座

#### SQT 10



- To be used for collet DIN 6499
- External coolant supply
- Collet is not included

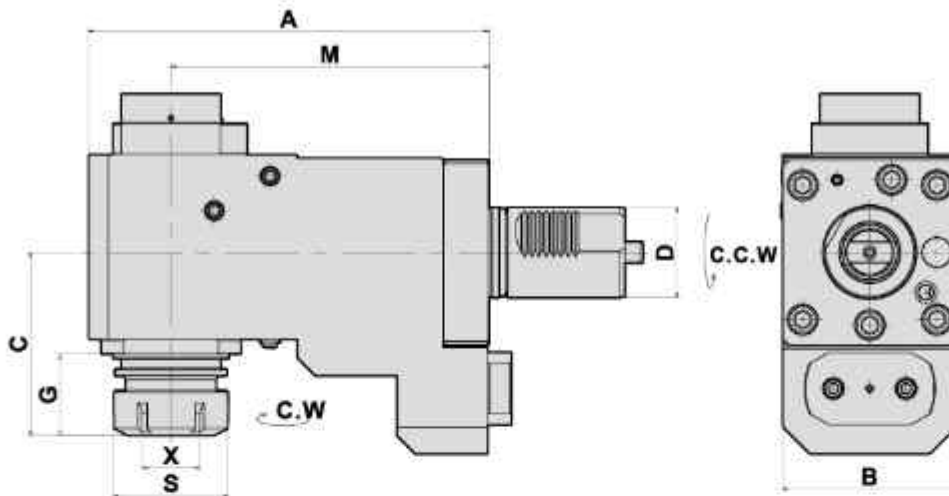
#### DIMENSIONS

Machine Type	Models	D	X Capacity	S	Maximum R.P.M.	A	B	C	F	G	M	Code No.	Order No.	(Kg) Weight
SQT 10M-12D 15M-16D SQT200M-16D 250M-16D	QTN 100M/150M SQT 10M	40	1-16 ER25	42	5000	±90°	38	65	66	30	70	1401AF-000	5352200-25B	5.3
SQT 15M-12D 18M-12D SQT200M-12D 250M-12D	QTN 200M/250M SQT 15M/18M	40	1-16 ER25	42	5000	±90°	38	65	66	30	90	1401AR-000	5362218-25B	6.7

### H TYPE MILLING AND DRILLING HEAD FOR MAIN SPINDLE

TYPE MAZAK MULTIPLEX

#### H系(徑向) 鑽銑刀座 (90°)



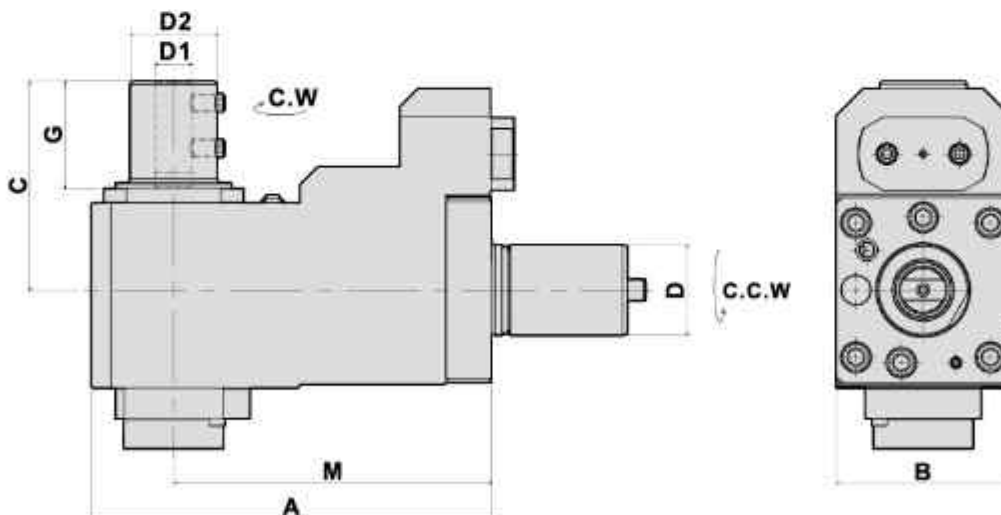
- To be used for collet DIN 6499
- Internal coolant supply: 50bar 中心出水
- Collet is not included

#### DIMENSIONS

Machine Type	Models	D	X Capacity	S	Maximum R.P.M.	A	B	C	G	M	Code No.	Order No.	(Kg) Weight
MP 6300Y/6300/630-12D MP 650-10D	MP630	50	3-26 ER40	63	5000	221	96	101	45	175	2501AD-000	5348832-CW	20.3

### H TYPE MILLING AND DRILLING HEAD FOR MAIN SPINDLE

#### H系(徑向) 鑽銑刀座 (90°)



- To be used for collet DIN 6499
- Internal coolant supply: 50bar 中心出水
- Collet is not included

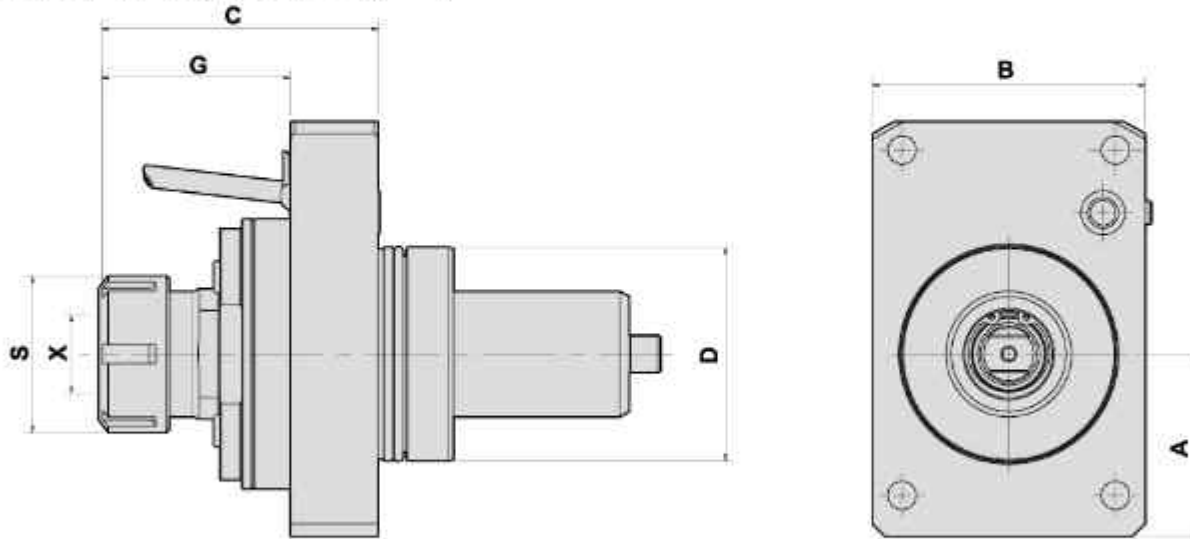
#### DIMENSIONS

Machine Type	Models	D	D1	D2	Maximum R.P.M.	A	B	C	G	M	Code No.	Order No.	(Kg) Weight
MP 6300Y/6300/630-12D MP 650-10D	MP630	50	20	48	5000	221	96	115	59	175	2501AE-000	5348832-CW-d20	20.6

### V TYPE MILLING AND DRILLING HEAD FOR MAIN SPINDLE

TYPE MAZAK QUICK TURN SMART 200M

#### V系(軸向) 鑽銑刀座 (0°)



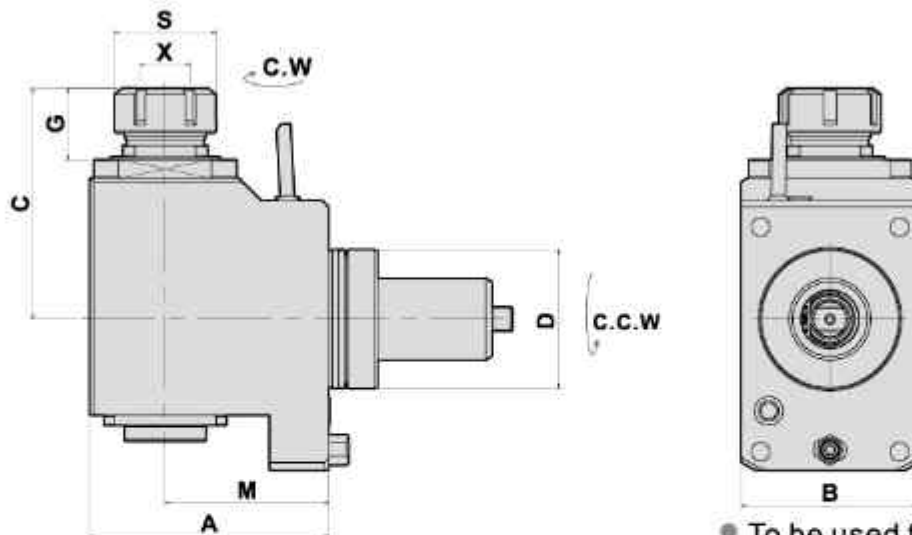
- To be used for collet DIN 6499
- External coolant supply
- Collet is not included

#### DIMENSIONS

Machine Type	Models	D	X Capacity	S	Maximum R.P.M.	A	B	C	G	Code No.	Order No.	(Kg) Weight
QTS 200M-12D	QTS 200M	68	2-20 ER32	50	6000	58	87	89	61	1681AA-000	MZK-DA68-ER32	4.6

### H TYPE MILLING AND DRILLING HEAD FOR MAIN SPINDLE

#### H系(徑向) 鑽銑刀座 (90°)



- To be used for collet DIN 6499
- External coolant supply
- Collet is not included

#### DIMENSIONS

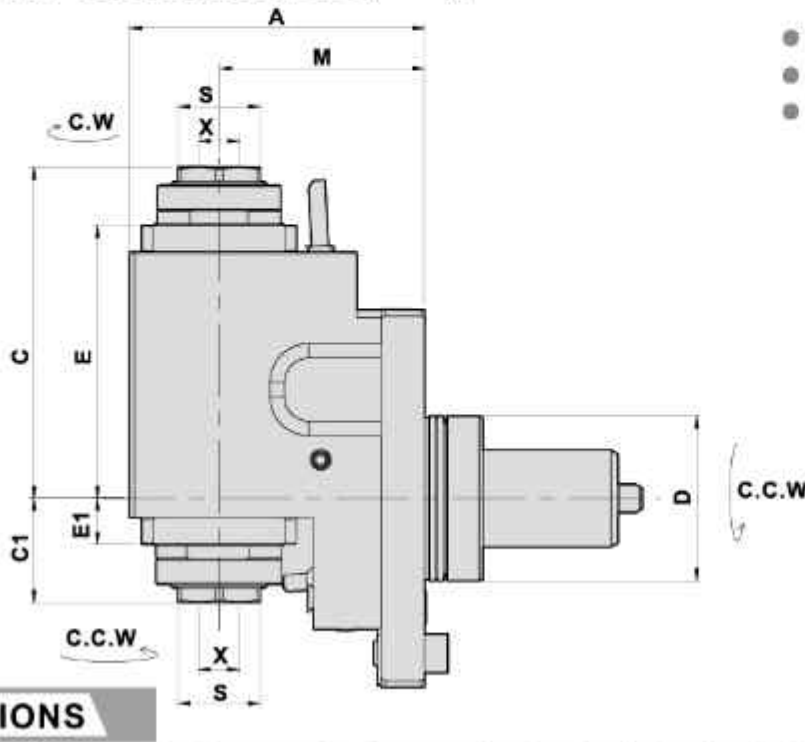
Machine Type	Models	D	X Capacity	S	Maximum R.P.M.	A	B	C	G	M	Code No.	Order No.	(Kg) Weight
QTS 200M-12D	QTS 200M	68	2-20 ER32	50	5000	117	87	115	34	80	2681AR-000	MZK-DF68-32-80	10.2
QTS 200M-12D	QTS 200M	68	2-20 ER32	50	5000	117	87	118	28.3	80	*2681AN-000	MZK-DF68-32-80-TA	10.4

\*HEAVY CUTTING(重切削)

### H TYPE MILLING DRILLING HEAD DOUBLE HEADS

TYPE MAZAK QUICK TURN SMART 200M

#### H系(徑向) 雙頭鑽銑刀座 (90°)



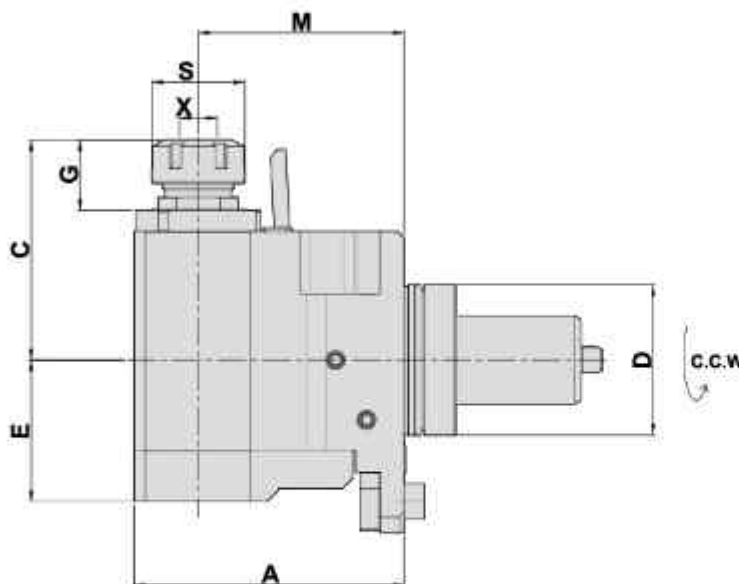
- To be used for collet DIN 6499
- External coolant supply
- Collet is not included

#### DIMENSIONS

Machine Type	Models	D	X Capacity	S	Maximum R.P.M.	A	B	C	C1	E	E1	M	Code No.	Order No.	(Kg) Weight
QTS 200M-12D	QTS 200M	68	2-20 ER32	38	5000	122	87	137	43	113	19	85	2681AD-000	MZK-DB68-32A-85D	11

### H TYPE MILLING DRILLING HEAD DOUBLE HEADS

#### H系(徑向) 雙頭鑽銑刀座 (90°)



- To be used for collet DIN 6499
- External coolant supply
- Collet is not included

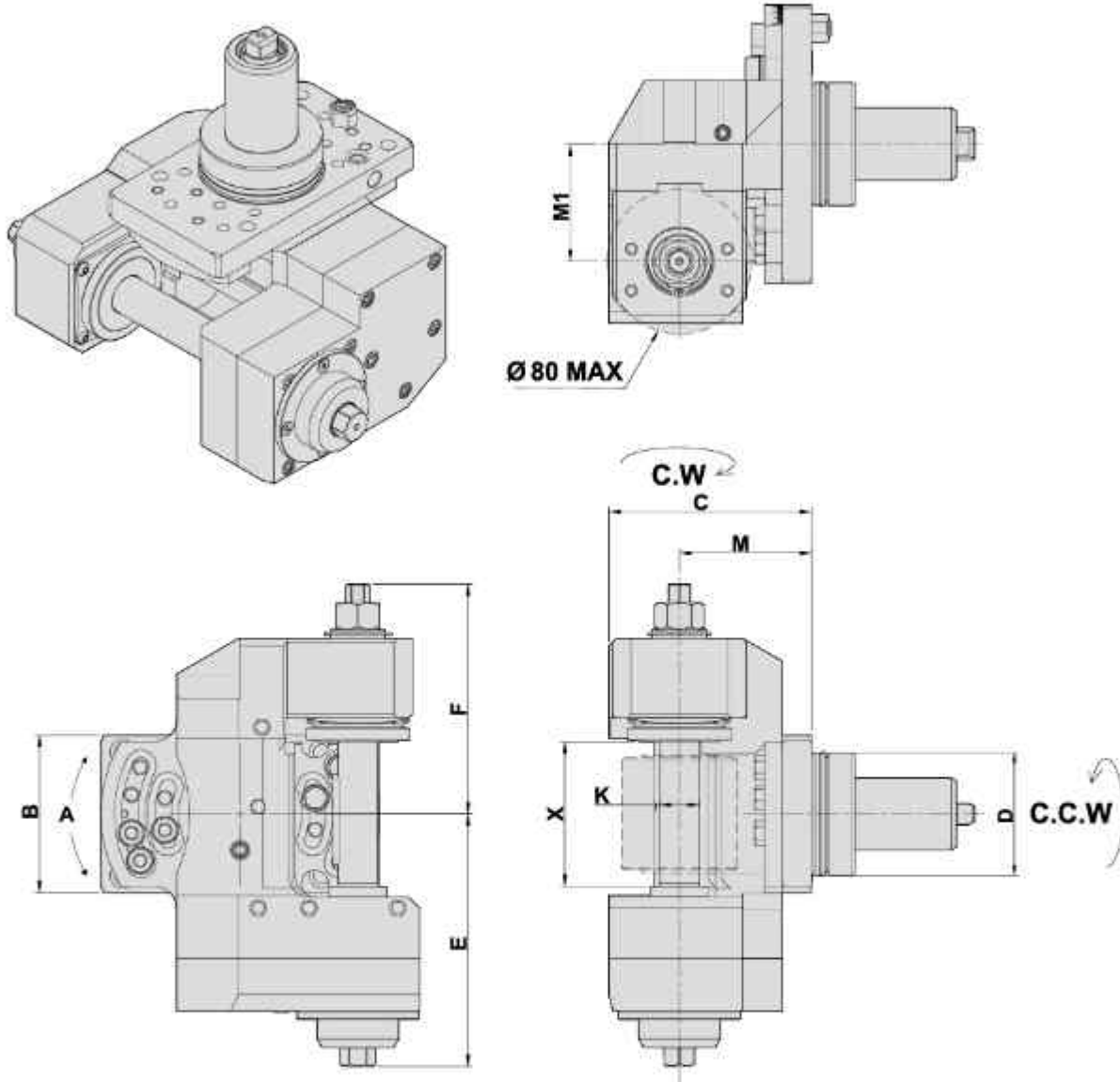
#### DIMENSIONS

Machine Type	Models	D	X Capacity	S	Maximum R.P.M.	A	B	C	G	E	M	M1	Code No.	Order No.	(Kg) Weight
QTS 200M-12D	QTS 200M	68	1-16 ER25	42	5000	122	84	99.5	32	64	85	30	2681AH-000	MZK-DF68-25x2-93DY	11.3
QTS 200M-12D	QTS 200M	68	1-16 ER25	42	5000	129	84	99.5	32	64	85	30	2681AM-000	MZK-DF68-25x2-100DY	11.7

### DRIVEN GEAR HOBBER

TYPE MAZAK QUICK TURN SMART 200M

### 滾齒刀座



#### DIMENSIONS

\*External coolant supply

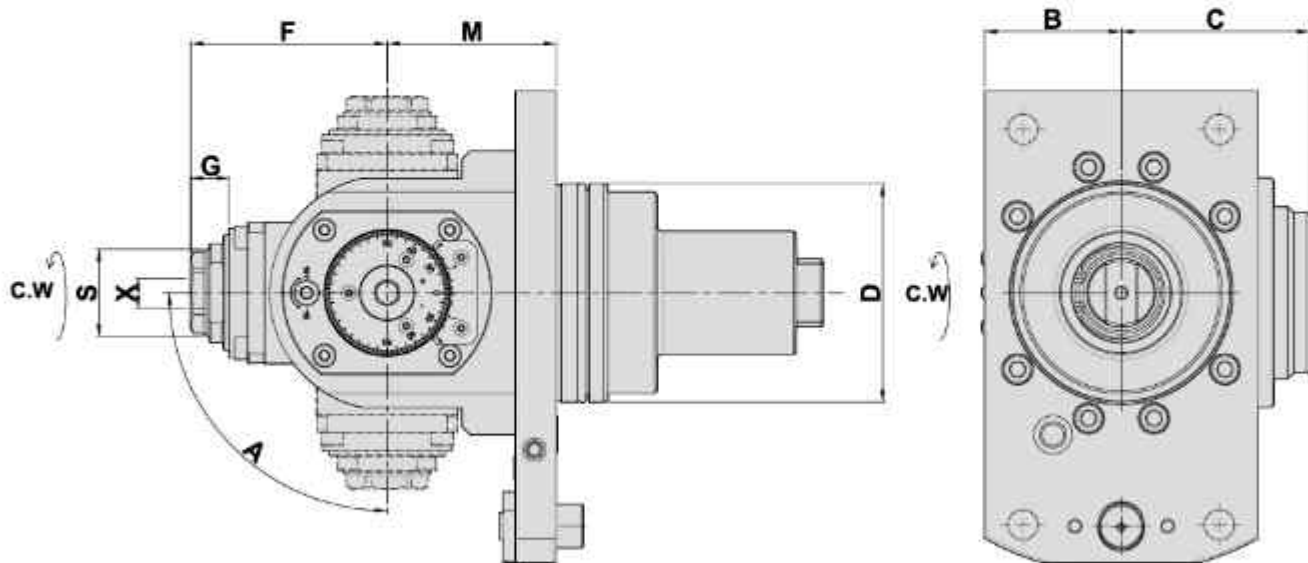
Machine Type	Models	D	X	Maximum R.P.M.	A	B	C	E	F	K	M	M1	Code No.	Order No.	(Kg) Weight
QTS 200M-12D	QTS 200M	68	80	4000	±30°	87	112	139.5	127	22	73	65	2681AF-000	MZK-DF68-22C-65-73	14.7
QTS 200M-12D	QTS 200M	68	80	4000	±30°	87	112	139.5	127	16	73	65	2681AS-000	MZK-DF68-16C-65-73	14.7



## ANGULAR HEAD

TYPE MAZAK SUPER QUICK TURN

### 萬向鑽銑刀座



角度可使用扳手微調

The angle can be adjusted by wrench.

- To be used for collet DIN 6499
- External coolant supply
- Collet is not included

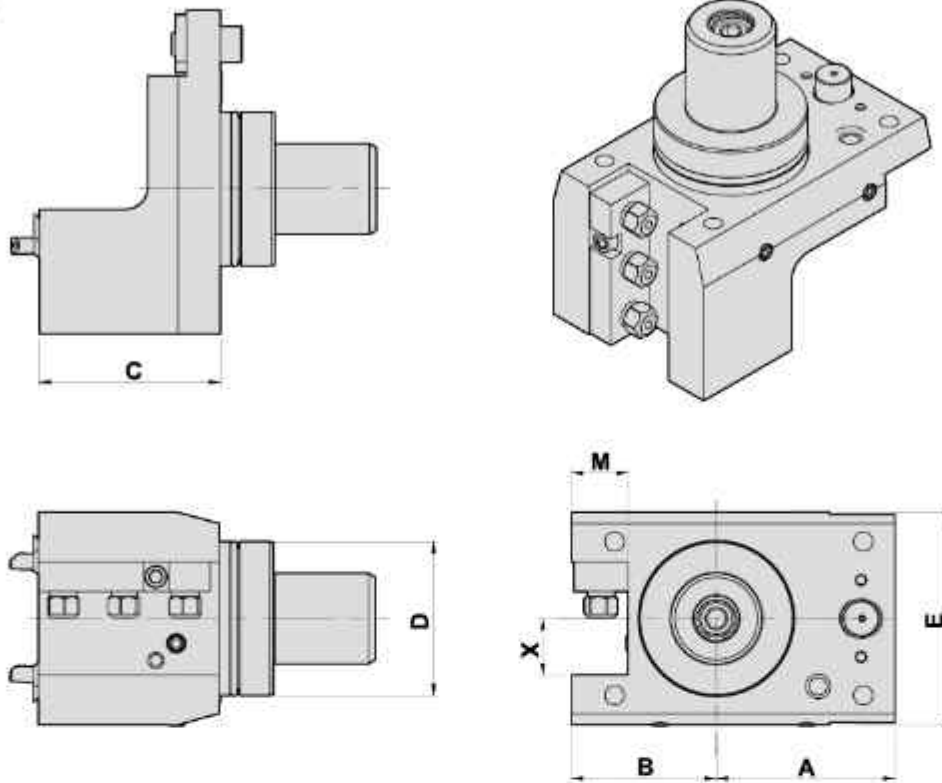
#### DIMENSIONS

Machine Type	D	X Capacity	S	Maximum R.P.M.	A	B	C	F	G	M	Code No.	Order No.	(Kg) Weight
QTS 300M	80	1-16 ER25A	32	5000	±90°	50	69	72	14	62	1801AC-000	MZK-DA80-25BAC-FT	8.9

## TURNING HOLDER

TYPE MAZAK QUICK TURN SMART 200M

### 外徑刀座



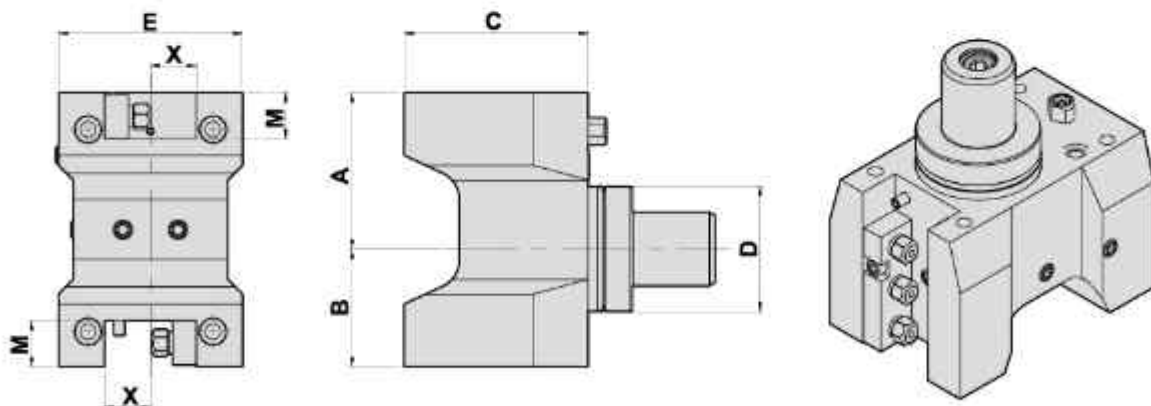
#### DIMENSIONS

● External coolant supply

Models	D	X	A	B	C	E	M	Code No.	Order No.	(Kg) Weight
QTS 200M	68	25	79	64	80	94	25	40608D-000	MZ-BMT68-C25-80	5.3

## DOUBLE TURNING HOLDER

### 外徑雙向式刀座



#### DIMENSIONS

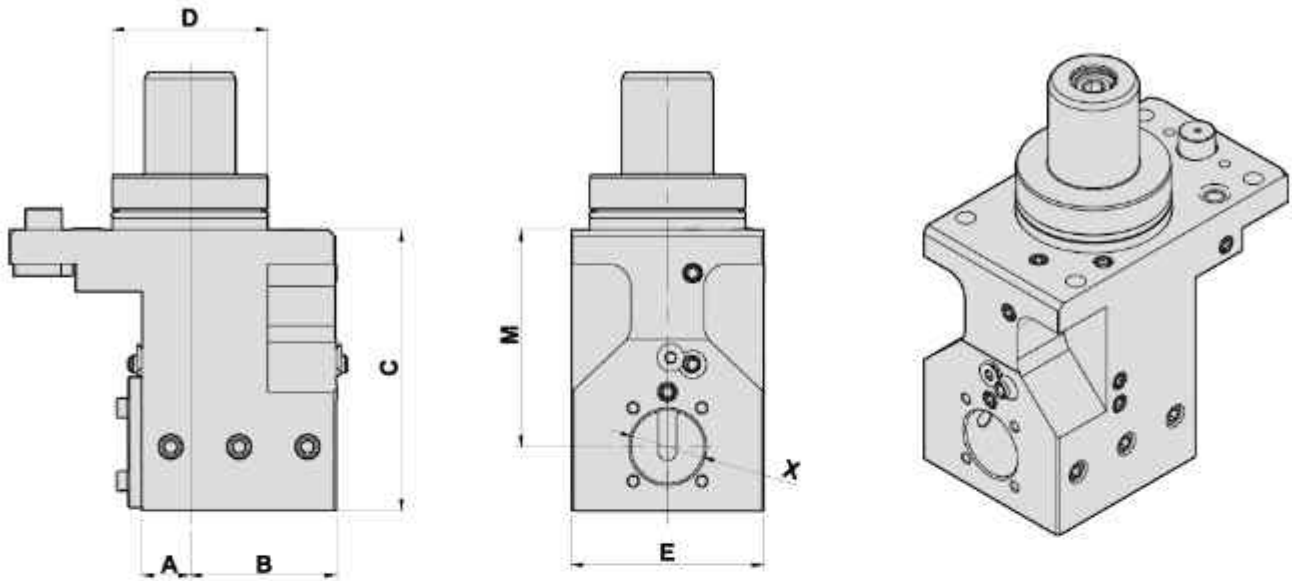
● External coolant supply

Models	D	X	A	B	C	E	M	Code No.	Order No.	(Kg) Weight	
QTS 200M	68	mm	25	85	64	100	100	25	40608C-000	MZ-BMT68-C25x2-100	9.2
		inch	1"	3.347"	2.519"	3.937"	3.937"	1"	4F108A-000	MZ-BMT68-C25.4x2-100	9.2

## BORING BAR HOLDER

TYPE MAZAK QUICK TURN SMART 200M

### 内孔刀座



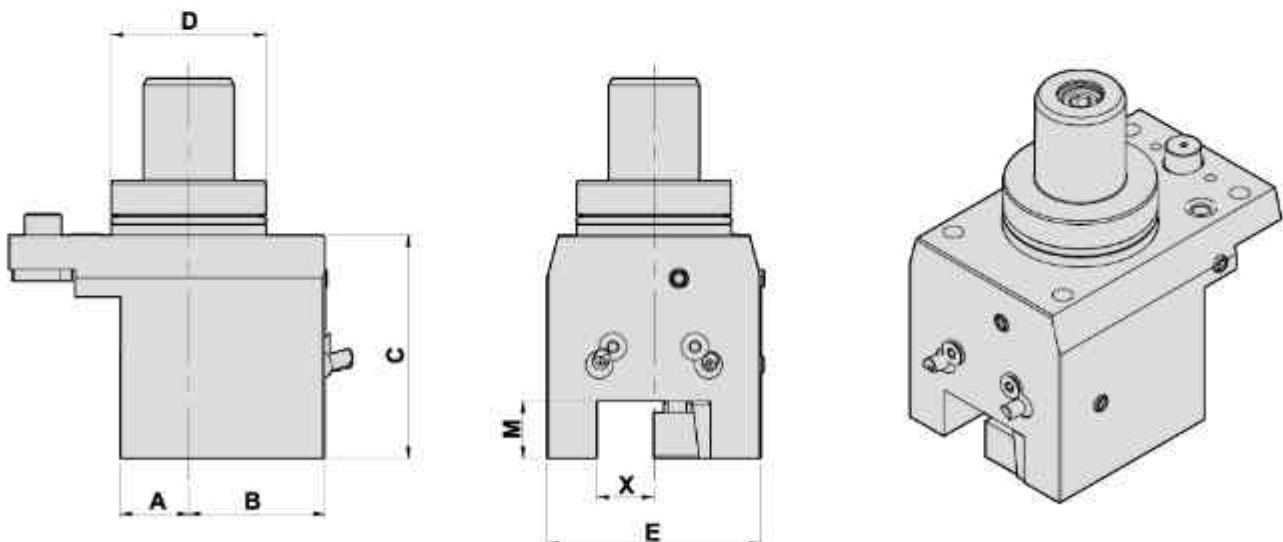
#### DIMENSIONS

● Internal, External coolant supply

Models	D	A	B	C	E	M	X	Code No.	Order No.	(Kg) Weight
QTS 200M	68	21	64	123	84	95	32	307088-000	MZ-BMT68-B32-95	8
QTS 200M	68	21	64	123	84	95	40	308089-000	MZ-BMT68-B40-95	7.7

## FACING HOLDER

### 端面刀座



#### DIMENSIONS

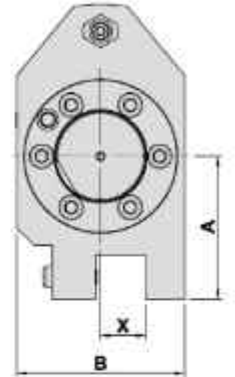
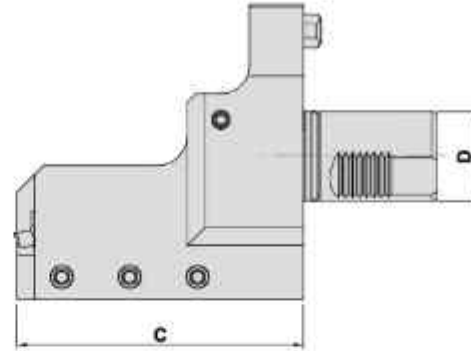
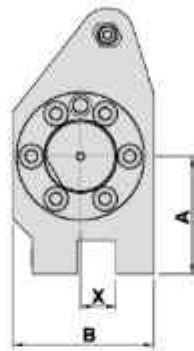
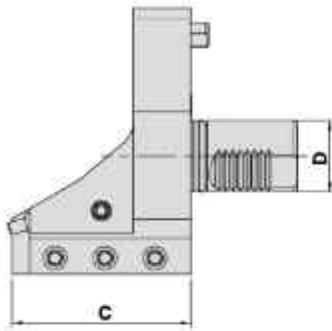
● External coolant supply

Models	D	A	B	C	E	M	X	Code No.	Order No.	(Kg) Weight
QTS 200M	68	30	60	98	94	25	25	505085-000	MZ-BMT68-F25-98	7.5

## FORWARD TURNING HOLDER --RH

TYPE MAZAK SUPER QUICK TURN&MULTIPLEX

### 外徑正面刀座



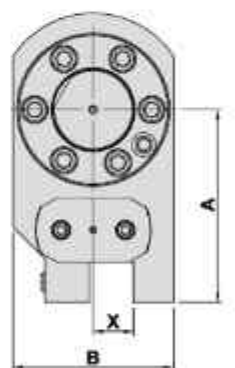
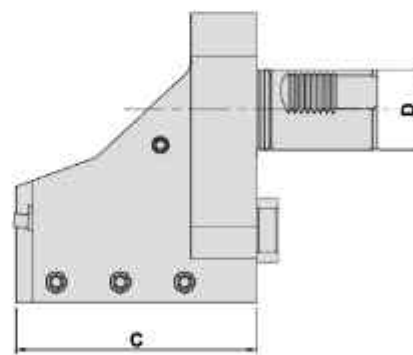
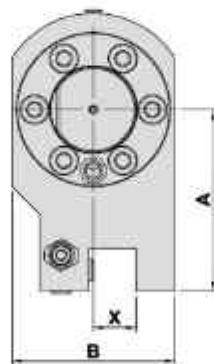
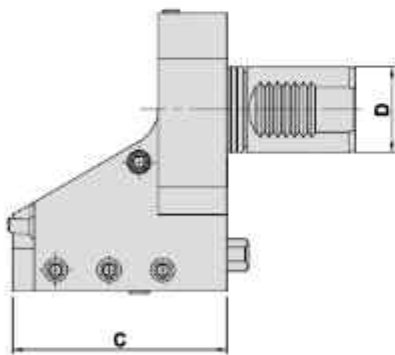
**SQT SERIES  
15M/18M**

**SQT SERIES  
28M/30M**

#### DIMENSIONS

● External coolant supply

Models	D	X	A	B	C	Code No.	Order No.	(Kg) Weight
QTN 100M/150M SQT 10M/15AM	mm	20	66	79	100	405081-000	T5351101	4.5
	inch	0.75"	2.6"	3.11"	3.937"	4E1081-000	T5351100	4.5
QTN 200M/250M SQT-15M/18M	mm	25	78	92	120	406081-000	T5361100	6
	inch	1"	3.071"	3.622"	4.724"	4F1081-000	T5361100-1"	6
SQT-28M/30M	mm	25	80	94	160	406082-000	T5381100	10
	inch	1"	3.15"	3.70"	6.299"	4F1082-000	T5381101	10
SQT-28M/30M	mm	32	87	107	160	407081-000	T5381100-C32	12
	inch	1.25"	3.425"	4.212"	6.299"	4G1081-000	T5381100-C1.25"	12



**MP SERIES  
MP610/MP620**

**MP SERIES  
MP630**

#### DIMENSIONS

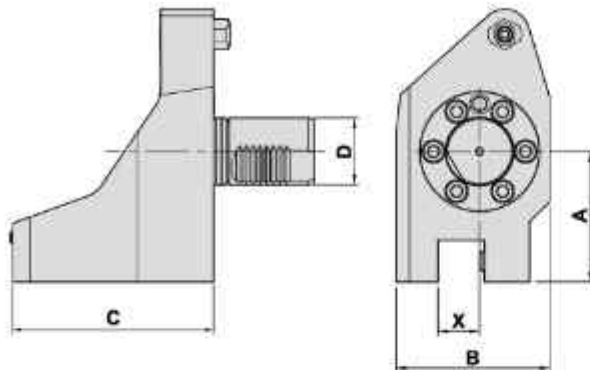
● External coolant supply

Models	D	X	A	B	C	Code No.	Order No.	(Kg) Weight
MP-610N/615N MP-410N/415N	mm	20	85	76	100	405082-000	T5346201	4.2
	inch	0.75"	3.347"	3"	3.937"	4E1082-000	T5346200	4.2
MP-620N/625N MP-420N	mm	25	83	92	120	406083-000	T5347200	5.2
	inch	1"	3.268"	3.622"	4.724"	4F1083-000	T5347200-1"	5.2
MP-630	mm	25	120	100	150	406084-000	T5348101	12.3
	inch	1"	4.724"	3.937"	5.905"	4F1084-000	T5348101-1"	12.3

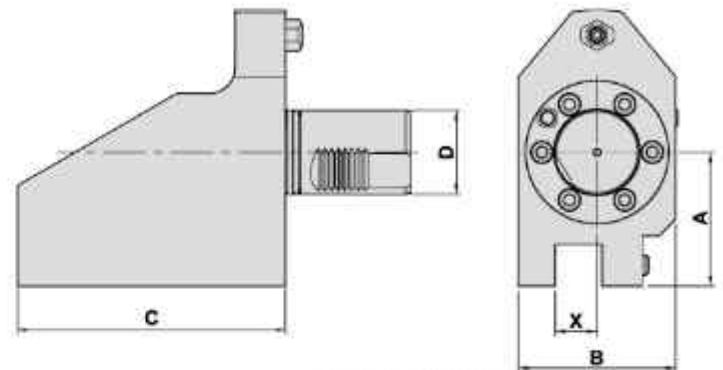
## REVERSE TURNING HOLDER -- LH

TYPE MAZAK SUPER QUICK TURN&MULTIPLEX

### 外徑左手刀座



**SQT SERIES  
15M/18M**



**SQT SERIES  
28M/30M**

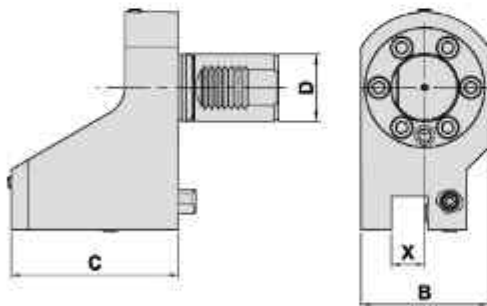
#### DIMENSIONS

● External coolant supply

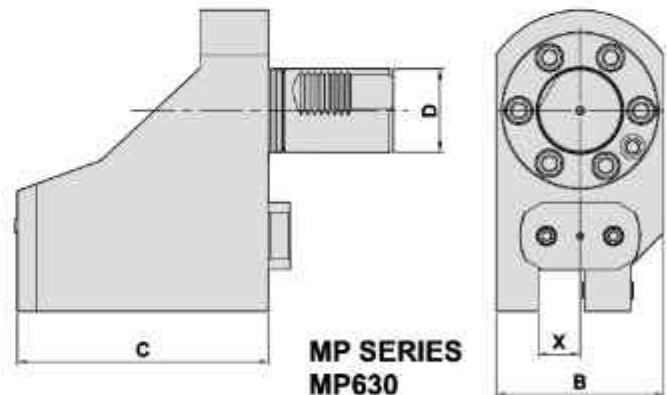
Models	D		X	A	B	C	Code No.	Order No.	(Kg) Weight
QTN 100M/150M SQT 10M/15AM	40	mm	20	66	76	100	405083-000	T5351701	4.3
		inch	0.75"	2.6"	3"	3.937"	4E1083-000	T5351700	4.3
QTN 200M/250M SQT-15M/18M	40	mm	25	78	92	120	406085-000	T5361600	6
		inch	1"	3.071"	3.622"	4.724"	4F1085-000	T5361600-1"	6
SQT-28M/30M	50	mm	25	80	94	160	406086-000	T5381600	10.7
		inch	1"	3.25"	3.7"	6.299"	4F1086-000	T5381601	10.7

## REVERSE TURNING HOLDER-- LH

### 外徑左手刀座



**MP SERIES  
MP610/MP620**



**MP SERIES  
MP630**

#### DIMENSIONS

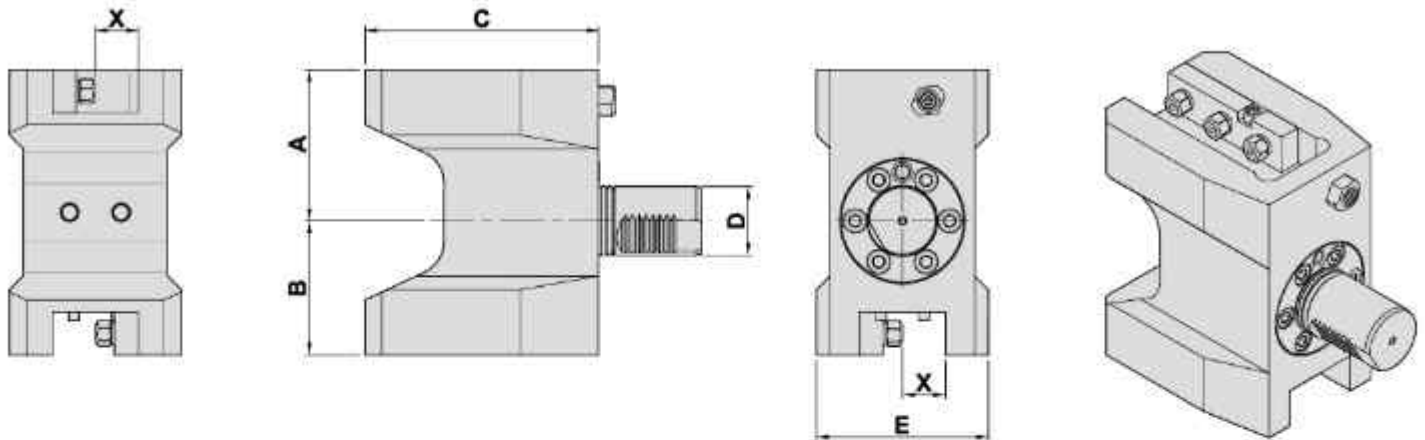
● External coolant supply

Models	D		X	A	B	C	Code No.	Order No.	(Kg) Weight
MP-610N/615N MP-410N/415N	40	mm	20	85	76	100	405084-000	T5346101	4.2
		inch	0.75"	3.347"	3"	3.937"	4E1084-000	T5346100	4.2
MP-620N/625N MP-420N	40	mm	25	83	92	120	406087-000	T5347100	5.2
		inch	1"	3.268"	3.622"	4.724"	4F1087-000	T5347100-1"	5.2
MP-630	50	mm	25	120	100	150	406088-000	T5348001	12.4
		inch	1"	4.724"	3.937"	5.905"	4F1088-000	T5348001-1"	12.4

## DOUBLE TURNING HOLDER

TYPE MAZAK SUPER QUICK TURN

### 外徑雙向式刀座



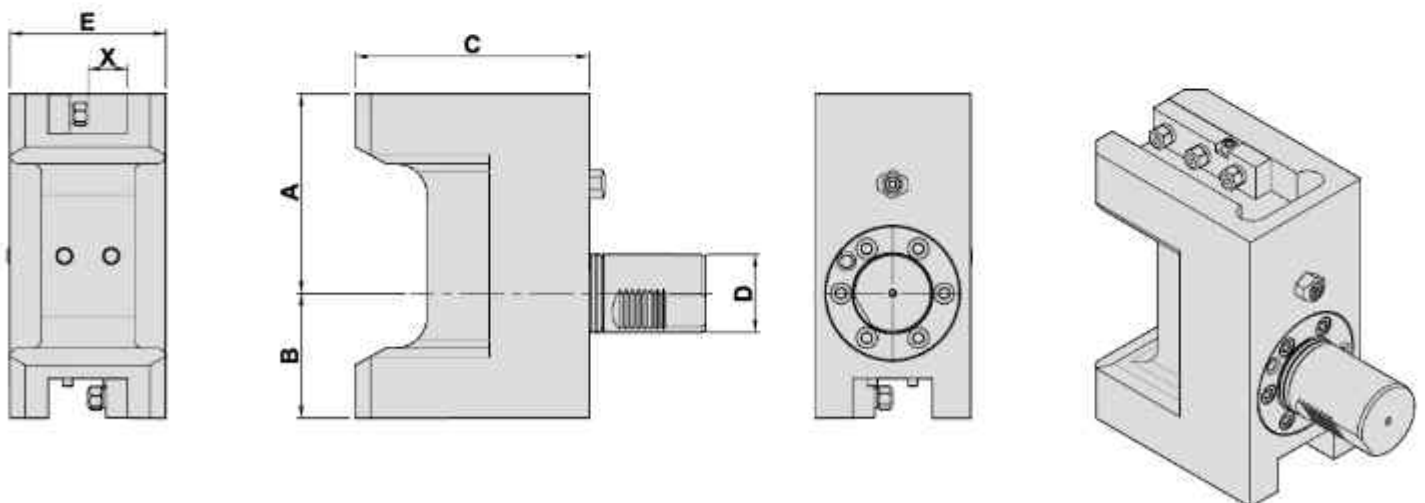
#### DIMENSIONS

● External coolant supply

Models	D		X	A	B	C	E	Code No.	Order No.	(Kg) Weight
QTN 100M/150M SQT-10M/15AM	40	mm	20	85	65	103	81	405085-000	T5353101	7
		inch	0.75"	3.347"	2.559"	4.055"	3.189"	4E1085-000	T5353100	7
QTN 200M/250M SQT-15M/18M	40	mm	25	88	78	136	100	406089-000	T5363300	11.5
		inch	1"	3.465"	3.071"	5.354"	3.937"	4F1089-000	T5363300-1"	11.5

## DOUBLE TURNING HOLDER

### 外徑雙向式刀座



#### DIMENSIONS

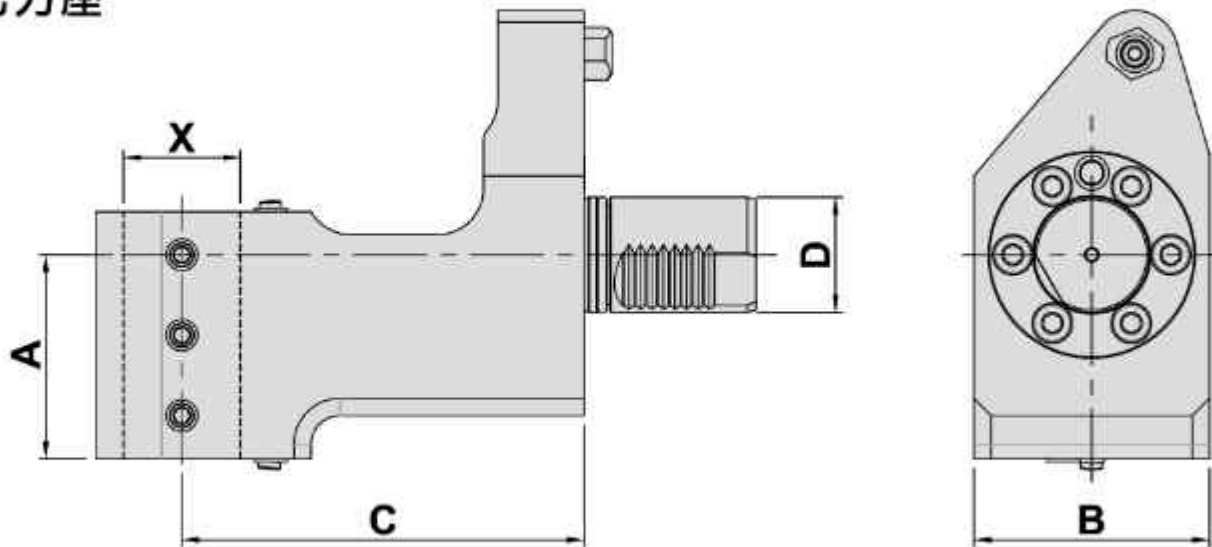
● External coolant supply

Models	D		X	A	B	C	E	Code No.	Order No.	(Kg) Weight
SQT-28M/30M	50	mm	25	128	80	150	100	406090-000	T5383801	17.2
		inch	1"	5.039"	3.150"	5.906"	3.937"	4F1090-000	T5383800	17.2

## BORING BAR HOLDER

TYPE MAZAK SUPER QUICK TURN

### 内孔刀座



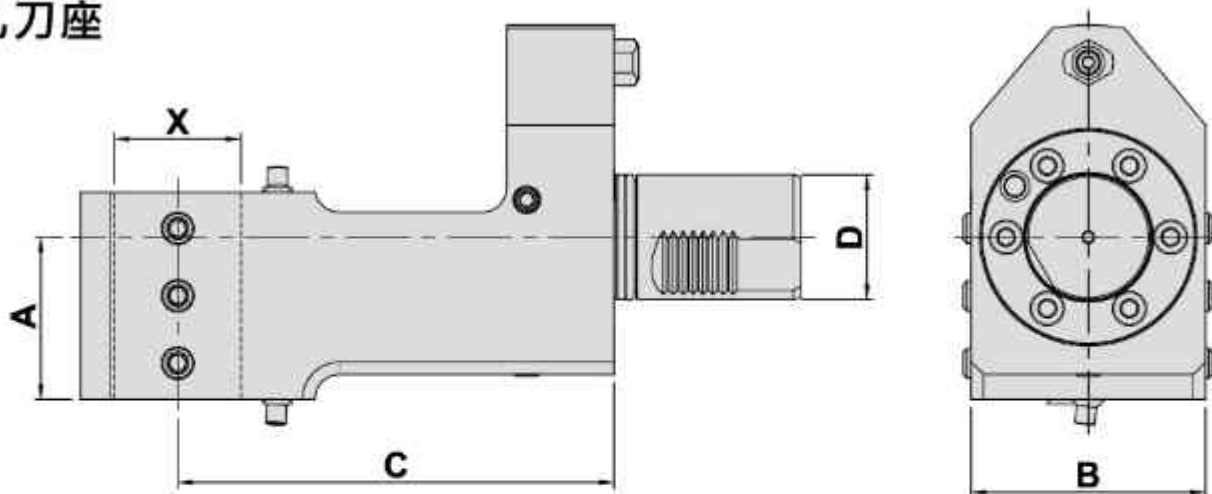
#### DIMENSIONS

● External coolant supply

Models	D		X	A	B	C	Code No.	Order No.	(Kg) Weight
QTN 100M/150M SQT-10M/15AM	40	mm	32	56	76	110	307081-000	B5351201	4.7
		inch	1.25"	2.205"	2.992"	4.331"	3G1081-000	B5351200	4.7
	mm	40	56	76	110	308088-000	B5351201-B40	5.3	
QTN 200M/250M SQT 15/18M	40	mm	40	71	82	140	308081-000	B5361200	8.6
		inch	1.5"	2.795"	3.228"	5.512"	3H1081-000	B5361200-1.5"	8.7

## BORING BAR HOLDER

### 内孔刀座



#### DIMENSIONS

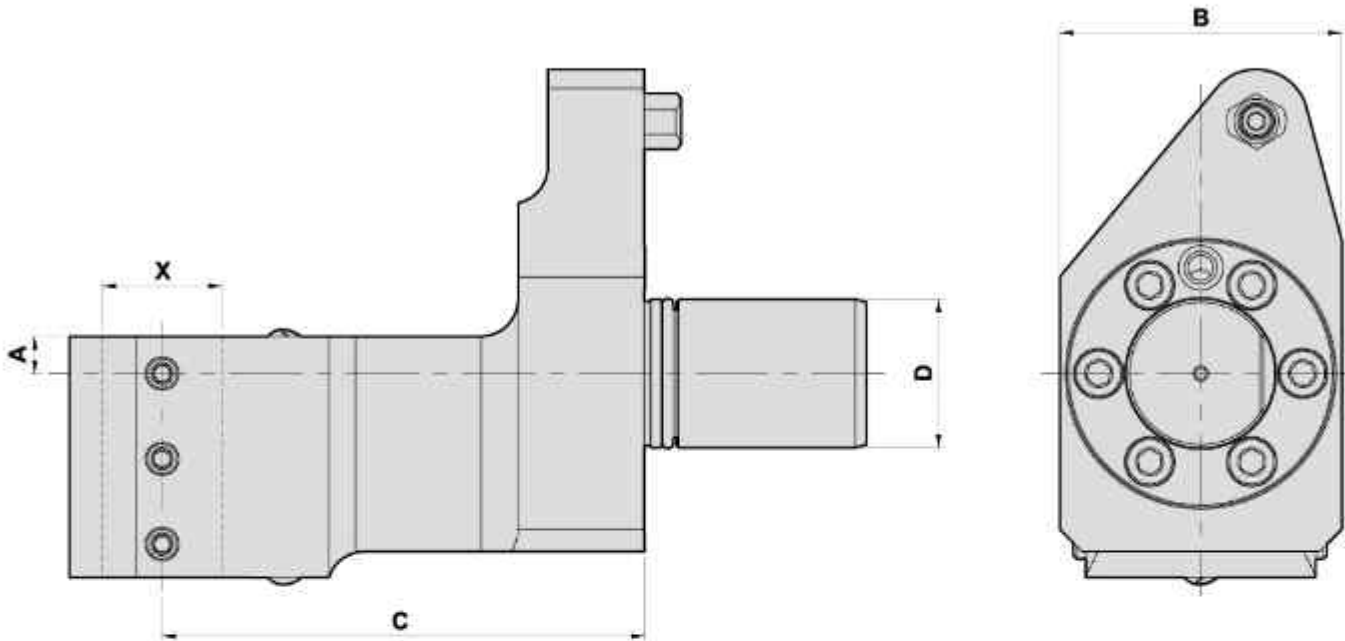
● External coolant supply

Models	D		X	A	B	C	Code No.	Order No.	(Kg) Weight
SQT-28M/30M	50	mm	40	65	94	175	308085-000	B5381201-B40	13.4
		inch	1.5"	2.559"	3.7"	6.890"	3H1087-000	B5381200-1.5"	13.5
SQT-28M/30M	50	mm	50	65	94	175	309081-000	B5381201	13
		inch	2"	2.559"	3.7"	6.890"	3I1081-000	B5381200	13

## BORING BAR HOLDER

TYPE MAZAK MULTIPLEX

### 内孔刀座



#### DIMENSIONS

● External coolant supply

Models	D		X	A	B	C	Code No.	Order No.	(Kg) Weight
MP-610N	40	mm	25	5	76	120	306081-000	B5346400	5
		inch	1"	0.197"	2.992"	4.724"	3F1081-000	B5346400-1"	5
		mm	32	10	76	120	307082-000	B5346300	5
		inch	1.25"	0.394"	2.992"	4.724"	3G1082-000	B5346300-1.25"	5
MP-615N	40	mm	25	10	76	130	306082-000	B5356201	5.7
		inch	1"	0.394"	2.992"	5.118"	3F1082-000	B5356201-1"	5.7
		mm	32	10	76	130	307083-000	B5356301	5.7
		inch	1.25"	0.394"	2.992"	5.118"	3G1083-000	B5356301-1.25"	5.7
MP-620N	40	mm	25	5	82	140	306083-000	B5347400	6.7
		inch	1"	0.197"	3.228"	5.512"	3F1083-000	B5347400-1"	6.7
		mm	40	10	82	140	308082-000	B5347300	6.7
		inch	1.5"	0.394"	3.228"	5.512"	3H1082-000	B5347300-1.5"	6.7

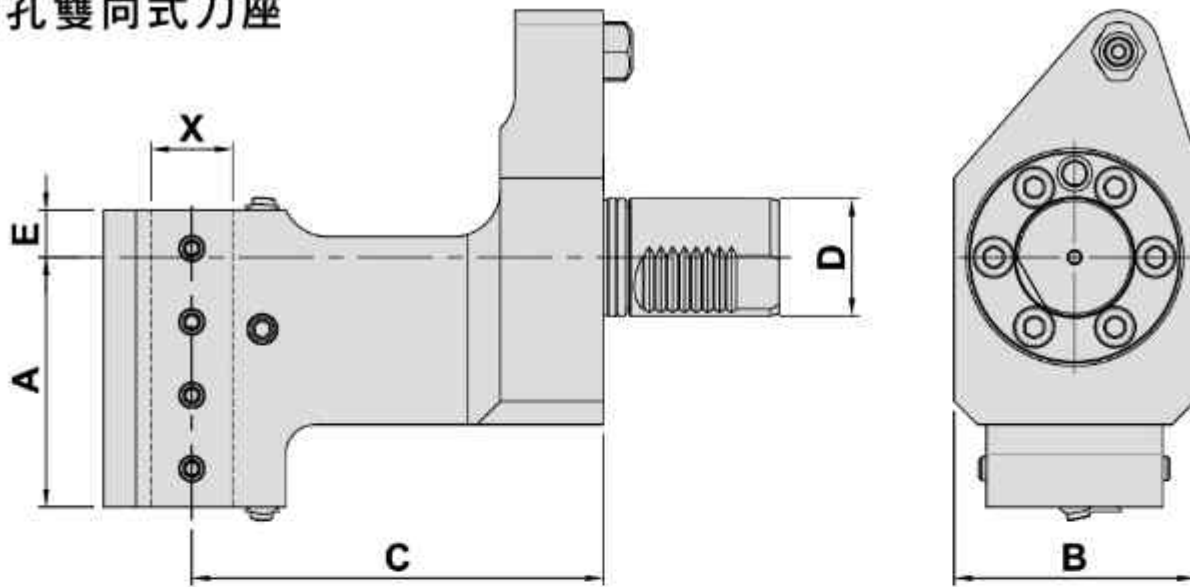


### DOUBLE BORING BAR HOLDER

TYPE

MAZAK SUPER QUICK TURN

#### 內孔雙向式刀座



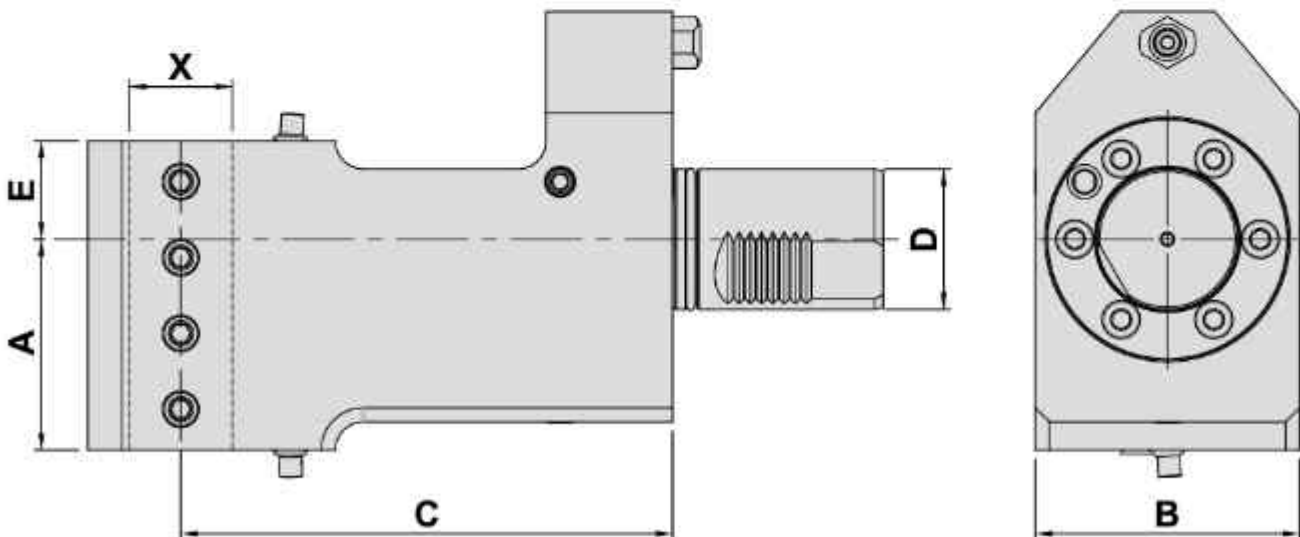
#### DIMENSIONS

● External coolant supply

Models	D	X	A	B	C	E	Code No.	Order No.	(Kg) Weight
QTN 100M/150M SQT 10M/15AM	mm	20	56	76	110	14.5	305081-000	B5353201	4.8
	inch	0.75"	2.205"	3"	4.331"	0.571"	3E1081-000	B5353200	4.8
QTN 200M/250M SQT 15M/18M	mm	25	85	82	140	16	306084-000	B5363400	8.3
	inch	1"	3.346"	3.228"	5.512"	0.630"	3F1084-000	B5363400-1"	8.3

### DOUBLE BORING BAR HOLDER

#### 內孔雙向式刀座



#### DIMENSIONS

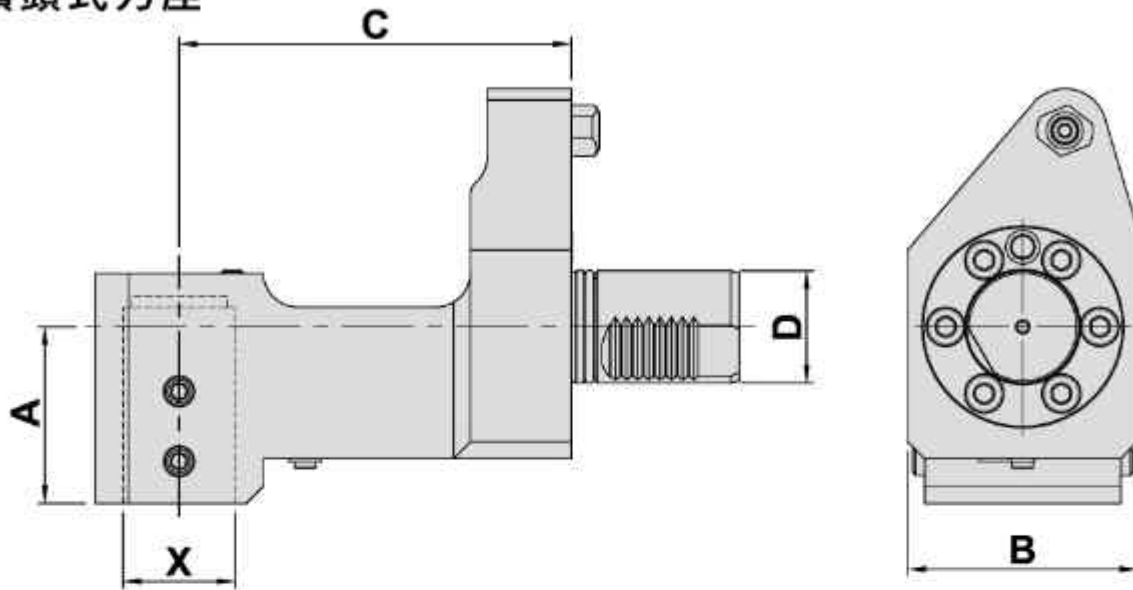
● External coolant supply

Models	D	X	A	B	C	E	Code No.	Order No.	(Kg) Weight
SQT-28M/30M	mm	32	75	94	175	35	307084-000	B5383901	16.6
	inch	1.25"	2.953"	3.7"	6.890"	1.378"	3G1084-000	B5383900	16.6

## U DRILL HOLDER

TYPE MAZAK SUPER QUICK TURN

### 快速鑽頭式刀座



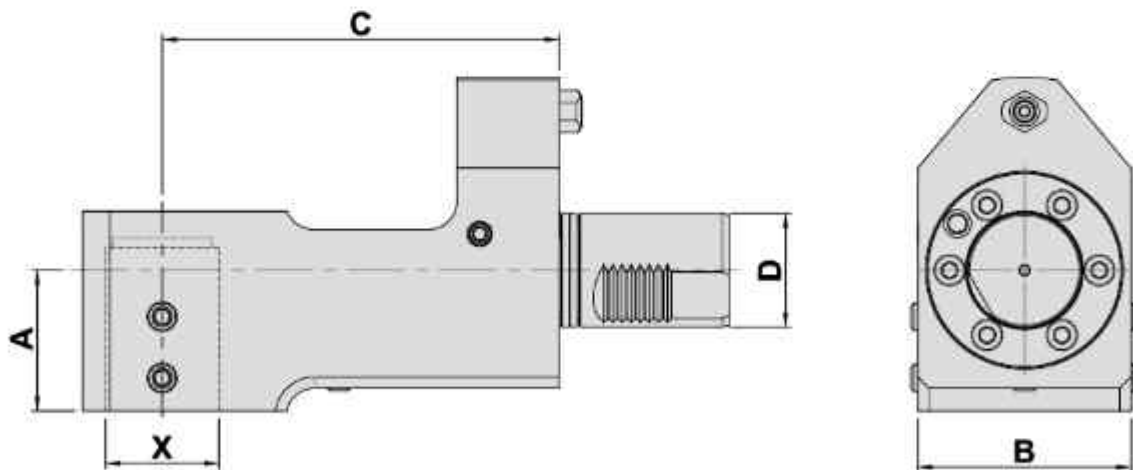
#### DIMENSIONS

● External, Internal coolant supply

Models	D		X	A	B	C	Code No.	Order No.	(Kg) Weight
QTN 100M/150M SQT 10M/15AM	40	mm	32	48	76	110	307085-000	U5351501	5.6
		inch	1.25"	1.890"	2.992"	4.331"	3G1085-000	U5351501-1.25"	5.6
QTN 200M/250M SQT 15M/18M	40	mm	40	63	82	140	308083-000	U5361500	7
		inch	1.5"	2.480"	3.228"	5.512"	3H1083-000	U5361500-1.5"	7

## U DRILL HOLDER

### 快速鑽頭式刀座



#### DIMENSIONS

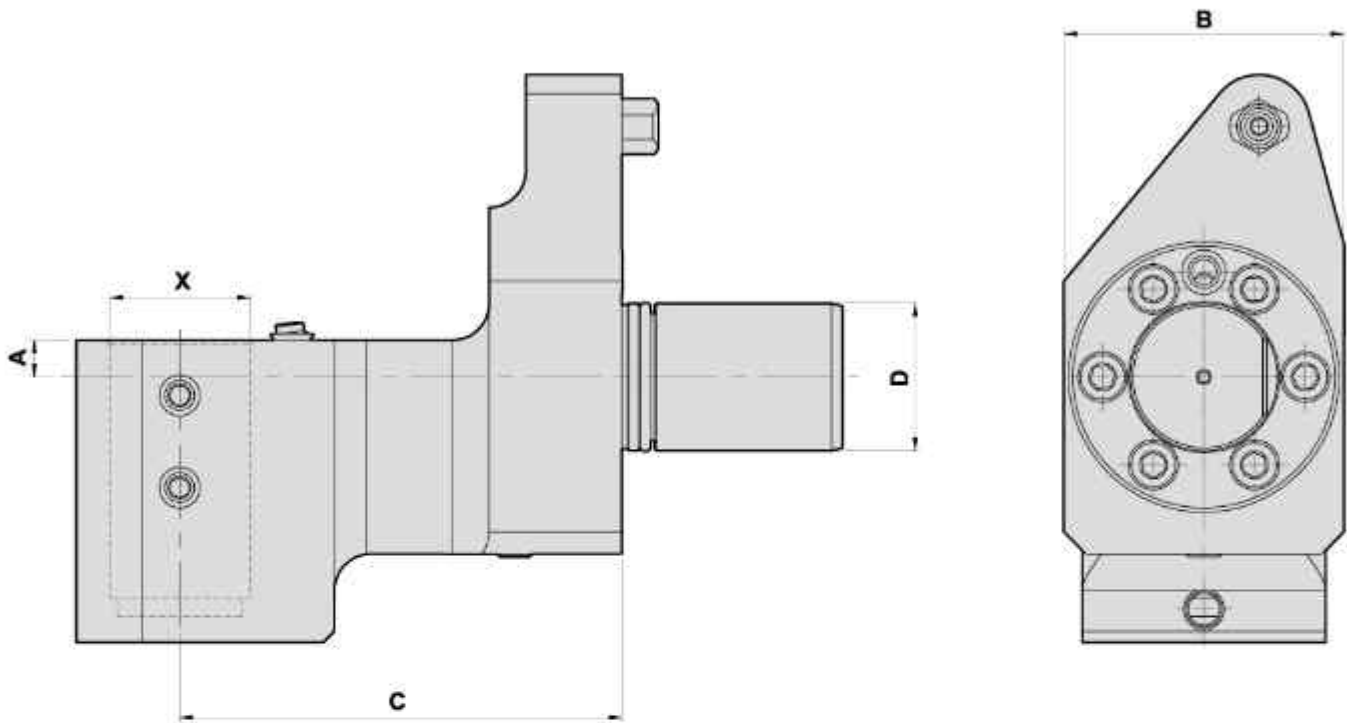
● External, Internal coolant supply

Models	D		X	A	B	C	Code No.	Order No.	(Kg) Weight
SQT-28M/30M	50	mm	40	62	94	175	308087-000	U5381501	14
		inch	1.5"	2.441"	3.70"	6.890"	3H1086-000	U5381501-1.5"	14
SQT-28M/30M	50	mm	50	62	94	175	309084-000	U5381501-B50	14
		inch	2"	2.441"	3.70"	6.890"	3I1082-000	U5381501-2"	14

## U DRILL HOLDER

TYPE MAZAK MULTIPLEX

### 快速鑽頭式刀座



#### DIMENSIONS

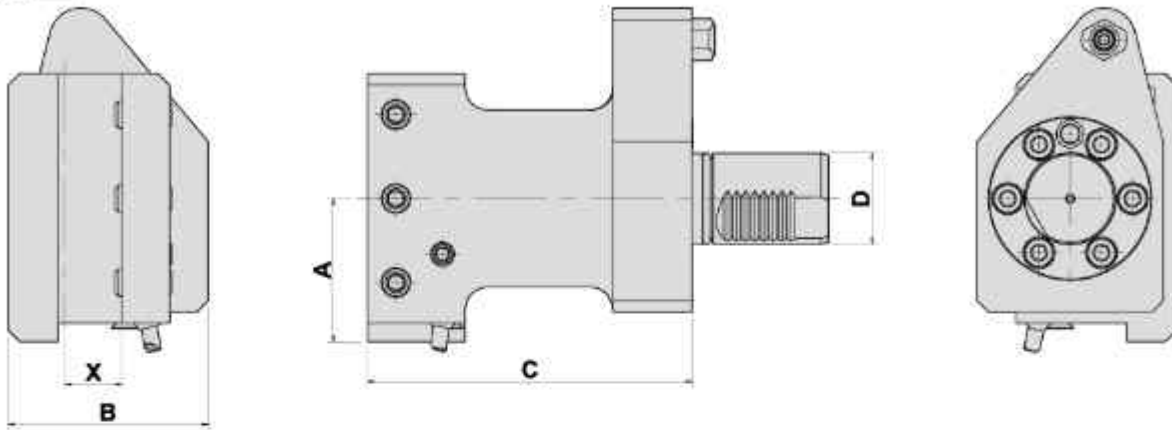
• External, Internal coolant supply

Models	D		X	A	B	C	Code No.	Order No.	(Kg) Weight
MP-610	40	mm	25	10	76	120	306085-000	U5346800	6.4
		inch	1"	0.394"	2.992"	4.724"	3F1085-000	U5346800-1"	6.4
MP-610	40	mm	40	10	76	120	308086-000	U5346800-B40	6.4
		inch	1.5"	0.394"	2.992"	4.724"	3H1085-000	U5346800-1.5"	6.4
MP-620	40	mm	40	10	82	140	308084-000	U5347700	7.5
		inch	1.5"	0.394"	3.228"	5.512"	3H1084-000	U5347700-1.5"	7.5

### FACING HOLDER -- RH

TYPE MAZAK SUPER QUICK TURN&MULTIPLEX

### 端面刀座



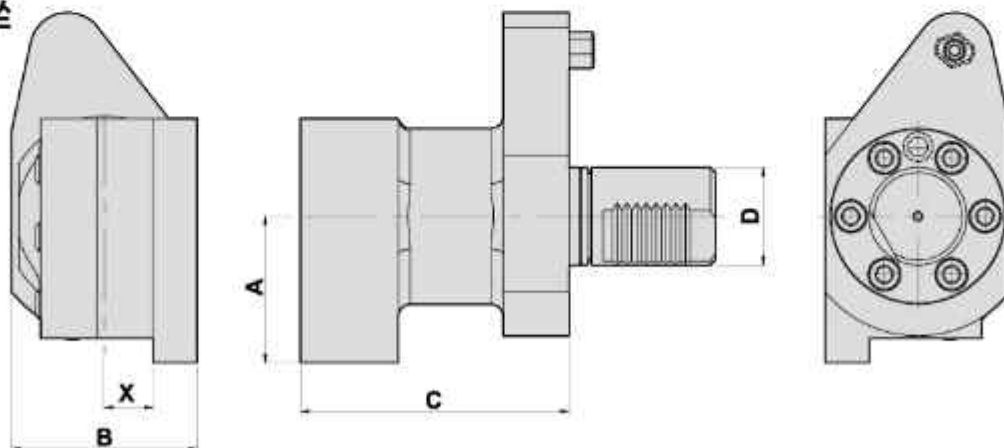
#### DIMENSIONS

● External coolant supply

Models	D		X	A	B	C	Code No.	Order No.	(Kg) Weight
QTN 200M/250M SQT-15M/18M	40	mm	25	63	82	143	506081-000	F5361300	7.5
		inch	1"	2.480"	3.228"	5.630"	5F1081-000	F5361300-1"	7.5
SQT-28M/30M	50	mm	25	57	90	163	506082-000	F5381301	9.1
		inch	1"	2.244"	3.543"	6.417"	5F1082-000	F5381300	9.1
MP-610N/615N MP-410N/415N	40	mm	20	50	76	110	505082-000	F5346500	5.8
		inch	0.75"	1.968"	2.992"	4.331"	5E1082-000	F5346500-0.75"	5.8
MP-620N/625N MP-420N	40	mm	25	63	82	143	506083-000	F5347500	7.5
		inch	1"	2.480"	3.228"	5.630"	5F1083-000	F5347500-1"	7.5
MP-630	50	mm	25	95	96	163	506084-000	F5348401	13.8
		inch	1"	3.740"	3.780"	6.417"	5F1084-000	F5348401-1"	13.8

### FACING HOLDER -- LH

### 端面刀座



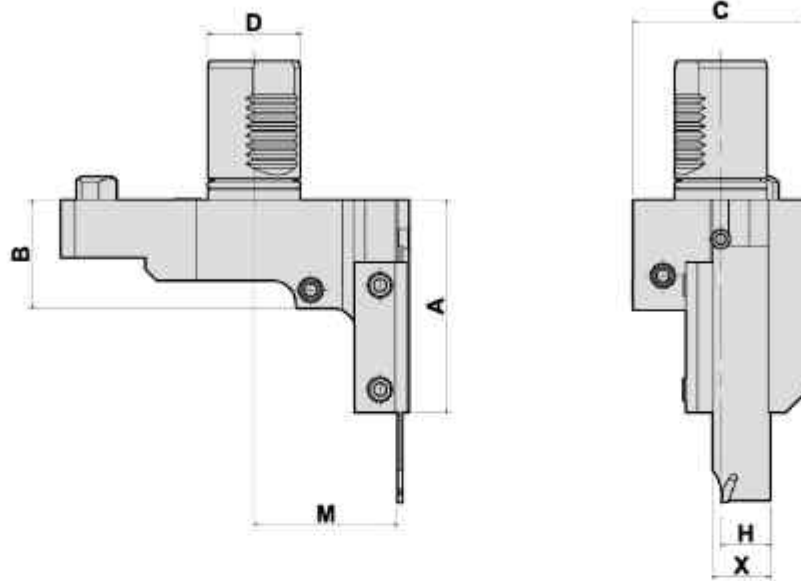
#### DIMENSIONS

Models	D		X	A	B	C	Code No.	Order No.	(Kg) Weight
QTN 100M/150M SQT 10M/15AM	40	mm	20	60	76	110	505081-000	F5351301	4.8
		inch	0.75"	2.362"	2.992"	4.331"	5E1081-000	F5351300	4.8
		inch	1"	2.362"	3.283"	5.748"	5F1087-000	F5351301-25.4-LH	6.3

## CUTTING HOLDER

TYPE MAZAK SUPER QUICK TURN

### 切斷刀座

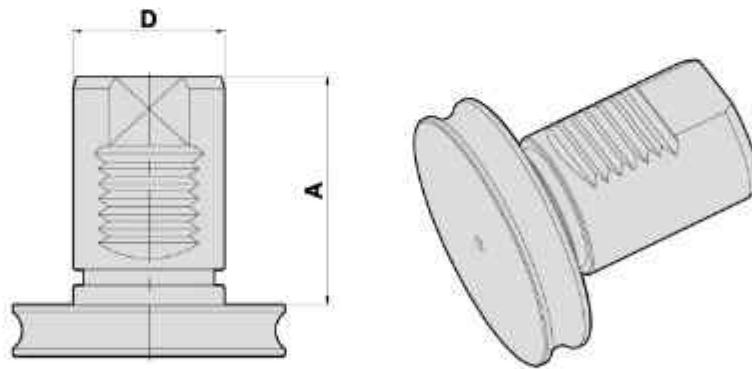


#### DIMENSIONS

● External coolant supply

Models	D	A	B	C	H	X	M	Code No.	Order No.	(Kg) Weight
QTN 100M/150M SQT-10M/15AM	40	92	47	76	20	25	62	705081-000	5351400	3.4
QTN 200M/250M SQT-15M/18M	40	110	60	84.5	25	32	75	706083-000	5361400	4.8

### PLUG 保孔蓋



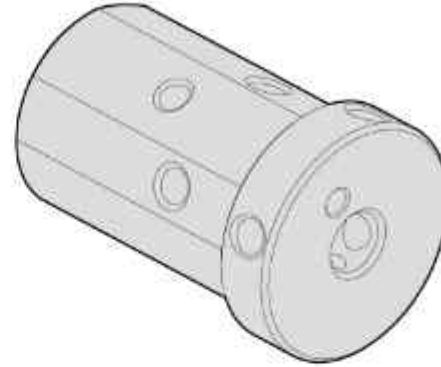
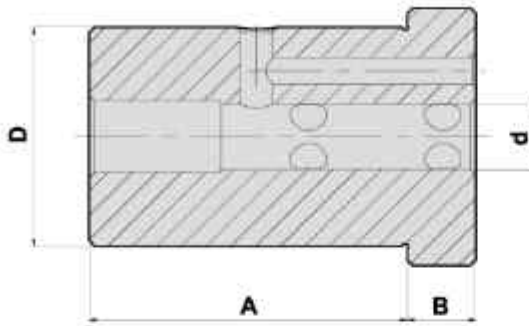
#### DIMENSIONS

Models	D	A	Code No.	Order No.
QTN 100M/150M SQT-10M/15AM QTN 200M/250M SQT-15M/18M MP610N	40	60	Z40MZK-000	MZK-5050100
MP620N MP630N SQT28MS	50	68	Z50MZK-000	MZK-5381700

## BORING SLEEVES

TYPE MK

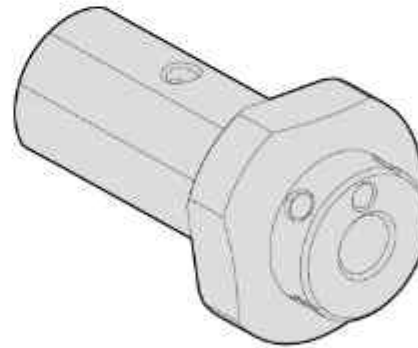
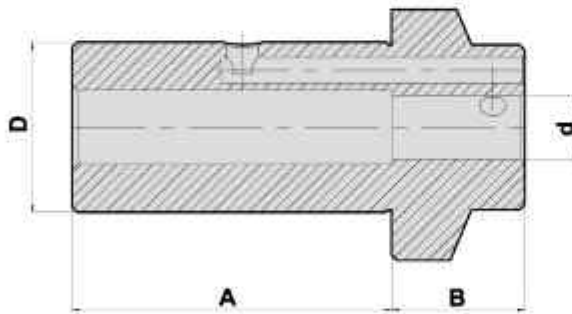
### 内孔套筒



#### DIMENSIONS

D		d	A	B	Code No.	Order No.
40	inch	0.3125"	2.283"	0.492"	A40A16-000	MK-E40-0.3125"
	mm	8	58	12.5	A40086-000	MK-E40-8
40	inch	0.375"	2.283"	0.492"	A40B16-000	MK-E40-0.375"
	mm	10	58	12.5	A40106-000	MK-E40-10
40	inch	0.5"	2.283"	0.492"	A40C16-000	MK-E40-0.5"
	mm	12	58	12.5	A40126-000	MK-E40-12
40	inch	0.625"	2.283"	0.492"	A40D16-000	MK-E40-0.625"
	mm	16	58	12.5	A40166-000	MK-E40-16
40	inch	0.75"	2.283"	0.492"	A40E16-000	MK-E40-0.75"
	mm	20	58	12.5	A40206-000	MK-E40-20
40	inch	1"	2.283"	0.492"	A40F16-000	MK-E40-1"
	mm	25	58	12.5	A40256-000	MK-E40-25
40	inch	1.25"	2.283"	0.492"	A40G16-000	MK-E40-1.25"
	mm	32	58	12.5	A40326-000	MK-E40-32

### BORING SLEEVES 内孔套筒



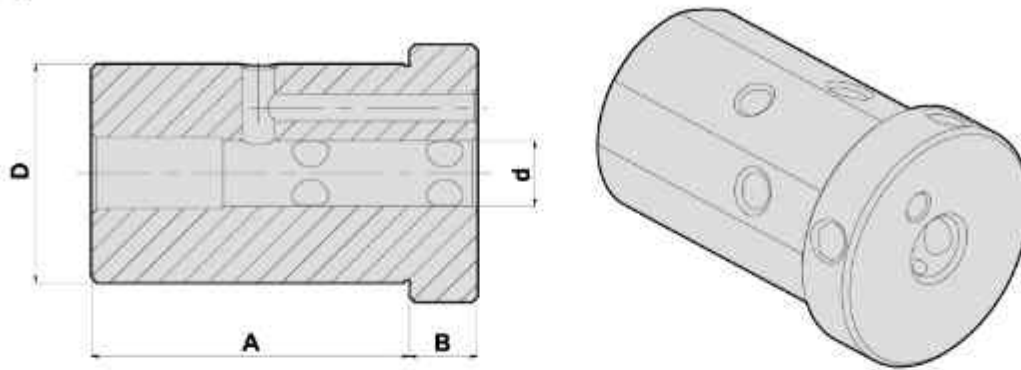
#### DIMENSIONS

D		d	A	B	Code No.	Order No.
32	inch	0.3125"	2.362"	0.984"	A32A16-000	MK-E32-0.3125"
	mm	8	60	25	A32086-000	MK-E32-8
32	inch	0.375"	2.362"	0.984"	A32B16-000	MK-E32-0.375"
	mm	10	60	25	A32106-000	MK-E32-10
32	inch	0.5"	2.362"	0.984"	A32C16-000	MK-E32-0.5"
	mm	12	60	25	A32126-000	MK-E32-12
32	inch	0.625"	2.362"	0.984"	A32D16-000	MK-E32-0.625"
	mm	16	60	25	A32166-000	MK-E32-16
32	inch	0.75"	2.362"	0.984"	A32E16-000	MK-E32-0.75"
	mm	20	60	25	A32206-000	MK-E32-20
32	inch	1"	2.362"	0.984"	A32F16-000	MK-E32-1"
	mm	25	60	25	A32256-000	MK-E32-25

## BORING SLEEVES

TYPE MK

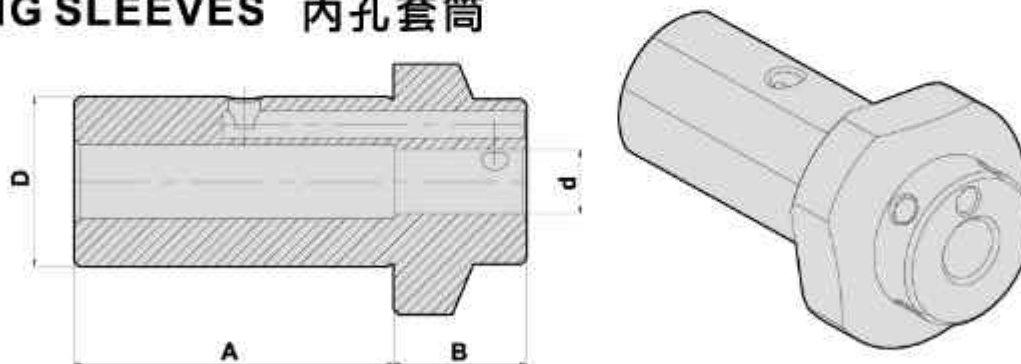
### 內孔套筒



#### DIMENSIONS

D		d	A	B	Code No.	Order No.
38.1	inch	0.25"	2.283"	0.492"	AH1X16-000	MK-E38.1-0.25"
38.1	inch	0.3125"	2.283"	0.492"	AH1A16-000	MK-E38.1-0.3125"
38.1	inch	0.375"	2.283"	0.492"	AH1B16-000	MK-E38.1-0.375"
38.1	inch	0.5"	2.283"	0.492"	AH1C16-000	MK-E38.1-0.5"
38.1	inch	0.625"	2.283"	0.492"	AH1D16-000	MK-E38.1-0.625"
38.1	inch	0.75"	2.283"	0.492"	AH1E16-000	MK-E38.1-0.75"
38.1	inch	1"	2.283"	0.492"	AH1F16-000	MK-E38.1-1"

## BORING SLEEVES 內孔套筒



#### DIMENSIONS

D		d	A	B	Code No.	Order No.
31.75	inch	0.25"	2.362"	0.984"	AG1X16-000	MK-E31.75-0.25"
31.75	inch	0.3125"	2.362"	0.984"	AG1A16-000	MK-E31.75-0.3125"
31.75	inch	0.375"	2.362"	0.984"	AG1B16-000	MK-E31.75-0.375"
31.75	inch	0.5"	2.362"	0.984"	AG1C16-000	MK-E31.75-0.5"
31.75	inch	0.625"	2.362"	0.984"	AG1D16-000	MK-E31.75-0.625"
31.75	inch	0.75"	2.362"	0.984"	AG1E16-000	MK-E31.75-0.75"
31.75	inch	1"	2.362"	0.984"	AG1F16-000	MK-E31.75-1"